



LEGACY OF FOUR DECADES - MIT IS NOW MIT-WPU



Dr. Vishwanath Karad

MIT WORLD PEACE UNIVERSITY | PUNE

TECHNOLOGY, RESEARCH, SOCIAL INNOVATION & PARTNERSHIPS

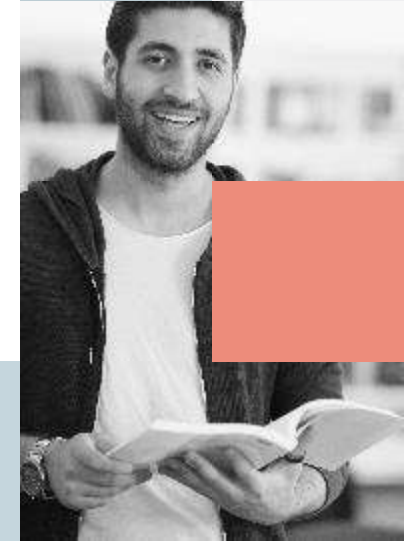
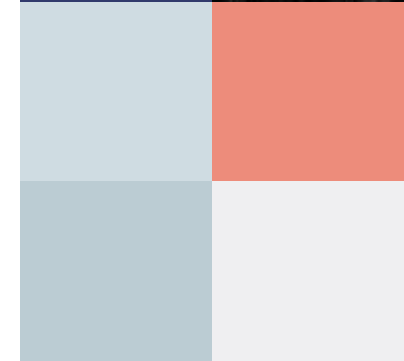
Supported By

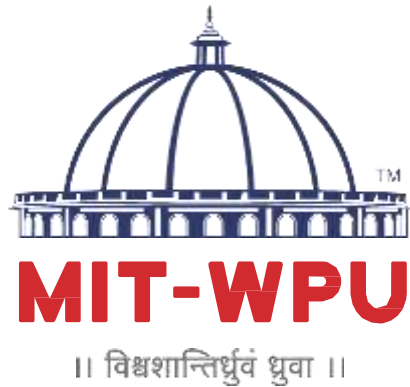


UNESCO Chair for
Human Rights, Democracy, Peace & Tolerance
World Peace Centre (Alandi) Pune, India

@ Kothrud, Pune, India

MIT-WPU is recognized by UGC





Dr. Vishwanath Karad

**MIT WORLD PEACE
UNIVERSITY** | PUNE

TECHNOLOGY, RESEARCH, SOCIAL INNOVATION & PARTNERSHIPS

MITWPU School of Polytechnic and Skill Development

MIT-WPU is recognized by UGC

Supported By





MIT-WPU

Flagship University of

MAEER's MIT Group of Institutions, Pune

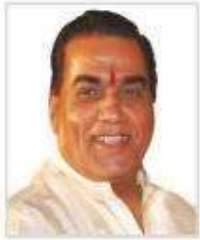
MAEER's MIT Group of Institutions, Pune, Best Known as MIT Pune, is synonymous for Engineering Education especially for its Foundation Campus of Kothrud, Pune.

Today, MAEER's MIT Group of Institutions caters to KG to PG education for its 50000+ bright Students in Engineering, Management, Pharmacy, Health Sciences (Medical), Art and Design, Humanities, Social Sciences, Human Rights and Peace Education, Politics and Governance Studies, School Education, and Polytechnic. The Group has over 1,00,000 Alumni.

Supported By



WESCA
Western Education Society's Council for Academic Accreditation
1000 Lakeside Drive, Suite 1000, San Francisco, CA 94109
Phone: (415) 774-1100 Fax: (415) 774-1101
www.wesca.org



Prof. (Dr.) Vishwanath D. Karad
Founder



Rahul V. Karad
Executive President



Dr. Raghunath A. Mashelkar
Chairman Advisory Board, MIT-WPU
Padma Vibhushan, Eminent Scientist,
President, Global Research Alliance



Dr. Vijay P. Bhatkar
Executive Chairman
Advisory Board, MIT-WPU
Padma Bhushan, Educationist,
Eminent Computer Scientist

Advisory Board



Dr. Anil Kakodkar
Eminent Nuclear Scientist &
Former Chairman, Atomic Energy
Commission of India



Mrs. Anu Aga
Padma Shri, MP Rajya Sabha,
Chairman - Teach for India,
Former Chairperson - Thermax Ltd.



Mr. Rajiv Bajaj
MD, Bajaj Auto Ltd.



Mr. Abhay Firodia
Chairman - Force Motors



Prof. Dr. Jay P. Gore
Principal Advisor, MIT-WPU
PhD (Purdue University),
M.S. (Penn State University)



Prof. Dr. Sanjay G. Dhande
Padma Shri,
Former Director, IIT Kanpur



Mr. Nanik Rupani
Chairman, Neutron Electronic
Systems Pvt. Ltd.
Former President - Indian Merchants
Chamber



Prof. Dr. Devi Singh
Vice-Chancellor, FLAME University
Former Director - IIM Lucknow



Prof. Dr. K. E. Seetha Ram
Founder Director, NUS - GAI,
Visiting Professor, The University of
Tokyo



Prof. Dr. V. G. Narayanan
Sr. Management Faculty,
Harvard Business School
Ph.D, Stanford University



Mr. Anand Sudarshan
Founder & Director of Sylvant
Advisors Pvt. Ltd.



Mrs. Rama Bijapurkar
Noted Management Author &
Consultant (PGDM, IIM A)



Dr. D. P. Agarwal
Former Chairman, UPSC



Mr. Shrinivas Raju
Founder & CEO
BluePal Solutions (Pvt) Ltd.



Prof. Dr. Raghunath K. Shevgaonkar
Professor,
Department of Electrical
Engineering, IIT, Bombay

MIT-WPU Leadership Team



Prof. Dr. S. Parasuraman
Vice Chancellor



Prof. Dr. Shrihari Honwad
Provost
Engineering



Prof. (Gp Capt) D. P. Apte
Registrar



Dr. Rohini S. Kale
Associate Dean,
School of Polytechnic & Skill
Development

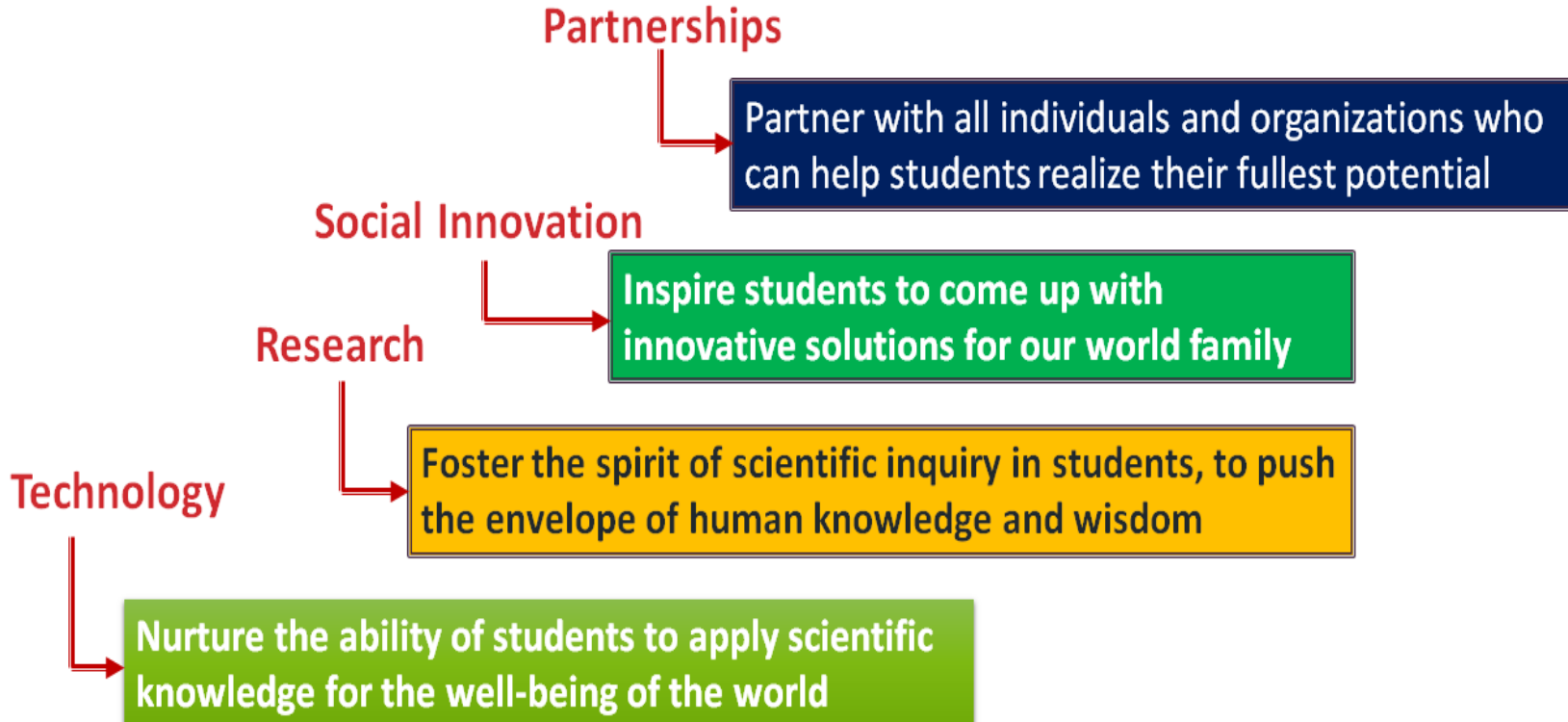


Dr. Sunil S. Karad
School Head
School of Polytechnic & Skill
Development



Dr. Vishwanath Karad
**MIT WORLD PEACE
UNIVERSITY** | PUNE
TECHNOLOGY, RESEARCH, SOCIAL INNOVATION & PARTNERSHIPS

MIT-WPU Stands for



Supported By



UNESCO Centre
New Delhi, India
UNESCO World Heritage Site
1972-1978



Dr. Vishwanath Karad
**MIT WORLD PEACE
UNIVERSITY** | PUNE
TECHNOLOGY, RESEARCH, SOCIAL INNOVATION & PARTNERSHIPS

Core Thought of MIT-WPU

Union of Science and Spirituality alone will bring Harmony and Peace to Humanity

- Swami Vivekananda

Since 1983, MIT Pune, is driven by Universal Values, Ethos, Culture and Traditions for the well-being of the Global Society at large



Dr. Vishwanath Karad
MIT WORLD PEACE
UNIVERSITY | PUNE
TECHNOLOGY, RESEARCH, SOCIAL INNOVATION & PARTNERSHIPS

What we think and What We Do

“Even the **best education, without values and ethics** is not just meaningless, in fact it is **dangerous**”

We at **MIT World Peace University (MIT-WPU)**, give you the worlds most advanced & uniquely defined **opportunity-based professional education** for your deserved success and also make you **contribute to the global sustainable peace** for the ultimate community of humanity – **all at the same time !**



Dr. Vishwanath Karad
**MIT WORLD PEACE
UNIVERSITY** | PUNE
TECHNOLOGY, RESEARCH, SOCIAL INNOVATION & PARTNERSHIPS

MIT-WPU Delivery



Individual Achievement



Social Enhancement



National Rejuvenation



Universal Influence



Dr. Vishwanath Karad
**MIT WORLD PEACE
UNIVERSITY** | PUNE
TECHNOLOGY, RESEARCH, SOCIAL INNOVATION & PARTNERSHIPS

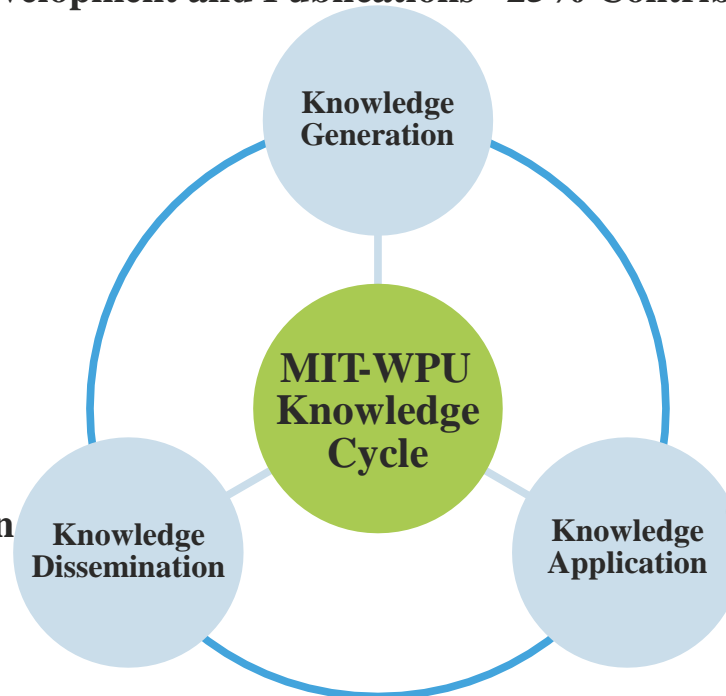
MIT-WPU Focus Areas

SUSTAINABLE DEVELOPMENT GOALS

1 NO POVERTY 	2 ZERO HUNGER 	3 GOOD HEALTH AND WELL-BEING 	4 QUALITY EDUCATION 	5 GENDER EQUALITY 	6 CLEAN WATER AND SANITATION 
7 AFFORDABLE AND CLEAN ENERGY 	8 DECENT WORK AND ECONOMIC GROWTH 	9 INDUSTRY, INNOVATION AND INFRASTRUCTURE 	10 REDUCED INEQUALITIES 	11 SUSTAINABLE CITIES AND COMMUNITIES 	12 RESPONSIBLE CONSUMPTION AND PRODUCTION 
13 CLIMATE ACTION 	14 LIFE BELOW WATER 	15 LIFE ON LAND 	16 PEACE, JUSTICE AND STRONG INSTITUTIONS 	17 PARTNERSHIPS FOR THE GOALS 	

MIT-WPU Knowledge Cycle

**Quality Focus on Input - Process - Output Research,
Development and Publications - 25% Contribution**



**Quality Focus on Input -
Process - Output Academic
Delivery - 50% Contribution**

**Quality Focus on Input - Process -
Output
Consultancy, Training, Allied Services -
25 Contribution**



Dr. Vishwanath Karad
MIT WORLD PEACE
UNIVERSITY | PUNE
TECHNOLOGY, RESEARCH, SOCIAL INNOVATION & PARTNERSHIPS

Ranking of MIT-WPU B. Tech. Program

- Ranked 5th in Private Universities in India (TOI 2019)
- **QS IGUAGE silver category of institutions**
 - MIT World Peace University- School of Engineering (Formerly MIT College of Engineering, Pune) has been ranked in a QS IGUAGE silver category of institutions.
- **Times Engineering Ranking in 2018**
 - MIT World Peace University- School of Engineering (Formerly MIT Pune) has been ranked 24 th in all institutes IITs, NITs and Governments institutes and it has been ranked as 14 th in all Private Engineering institutes in INDIA.



Dr. Vishwanath Karad
MIT WORLD PEACE
UNIVERSITY | PUNE
TECHNOLOGY, RESEARCH, SOCIAL INNOVATION & PARTNERSHIPS

Ranking of MIT-WPU B. Tech. Program

- **National Board of Accreditation's**

- MIT World Peace University- School of Engineering (Formerly MIT Pune and MIT College of Engineering, Pune) have been consistently accredited in last decade for various Engineering programs by National Board of Accreditation's (AICTE's autonomous body under MHRD, Govt. of INDIA)

- **NIRF (National Institutional Ranking Framework)**

- MIT World Peace University- School of Engineering (Formerly MIT Pune and MIT College of Engineering, Pune) have been consistently listed among the ranked institutions in engineering category during year 2016, 2017 & recently in year 2018.
- Listed **Top Private University in India** by Jagran Josh by Vice Precedent of India.

Supported By





Dr. Vishwanath Karad
MIT WORLD PEACE
UNIVERSITY | PUNE
TECHNOLOGY, RESEARCH, SOCIAL INNOVATION & PARTNERSHIPS

Programs under School of Polytechnic

Three year full time Programs

- **Diploma in Civil Engineering**
- **Diploma in Computer Engineering**
- **Diploma in Electronics & Telecommunication Engineering**
- **Diploma in Mechanical Engineering**

Six year full time Programs

- **Integrated B. Tech Civil Engineering**
- **Integrated B. Tech Computer Engineering**
- **Integrated B. Tech Electronics & Telecommunication Engineering**
- **Integrated B. Tech Mechanical Engineering**



WPU Method for Engineering Programs

WPU is a multi-dimensional academic inputs method that provides holistic and meaningful higher education for peace with the following focus areas –

- **Academic Credit System (ACS):** Flexible credit system for Integrated B.Tech allowing students to customize their education after foundation, by opting for a suitable track
- **Continuously Updated Education (CUEd™):** Continuously Updated Education is a way of ensuring effective learning @ MIT-WPU. The CUEd System helps in adapting the latest development in each subject into the real time learning-teaching.
- **Research Collaborations:** Alignment with the premier national and international research organisation across sectors - private, public & NGOs

Supported By





Dr. Vishwanath Karad
**MIT WORLD PEACE
UNIVERSITY** | PUNE
TECHNOLOGY, RESEARCH, SOCIAL INNOVATION & PARTNERSHIPS

WPU Method

- **Industrial Collaboration for Internship:** Partnerships with over 1200 organisations across sectors for 6 weeks of industry internship for diploma in engineering as an integral part of curriculum
- **Faculty:** Nationally and Internationally acclaimed faculty and research scholars
- **Faculty Team Teaching :** 50% of the Classroom Sessions will be engaged by two or more faculty members jointly for effective learning
- **Digital Learning Technology:** Facilitates to transform teaching and learning for improved understanding, retention and application of knowledge Residential Programs
- **International Credit Program For Integrated B.Tech * :** Collaboration with universities in US, UK, Europe and Australia.

Supported By





Dr. Vishwanath Karad
**MIT WORLD PEACE
UNIVERSITY** | PUNE
TECHNOLOGY, RESEARCH, SOCIAL INNOVATION & PARTNERSHIPS

WPU Method

- **National Study Tour**
- **Peace for Holistic Development:** Shaping winning personalities of students through focus on Human Skills for personal as well as spiritual development resulting into social inclusion and social innovation
- **Sports Culture for Peace:** Talent search and Nurturing sports spirit while providing opportunities through sports facilities to all the students, encouraging them to participate at National & International Sports conclaves
- **Social Missions:** Inculcating Social Responsibility in Students by activities oriented around the United Nation's 17 Sustainable Development Goals. Our world's first initiatives BCS, NTC, NWP and BANA

Supported By





Dr. Vishwanath Karad
**MIT WORLD PEACE
UNIVERSITY** | PUNE
TECHNOLOGY, RESEARCH, SOCIAL INNOVATION & PARTNERSHIPS

WPU Method

- **Alumni involvement:** Handholding, Scholarship Support and Experience sharing by Alumni through mentoring and providing networking opportunities for Professional and Career Development of Students
- **Fostering Entrepreneurship:** A culture that promotes and inculcates entrepreneurial thinking in students, backed by research labs and incubation center
- **Competency Mapping:** of every student for better career planning and progression
- **Mentoring Program** and Unique Progress Assessment tool of ‘**Learning Diary**’

Supported By





Dr. Vishwanath Karad
**MIT WORLD PEACE
UNIVERSITY** | PUNE
TECHNOLOGY, RESEARCH, SOCIAL INNOVATION & PARTNERSHIPS

WPU Method

- **Life @ MIT - Beyond Classroom:** Exceptional avenues made available to students for beyond classroom engagement and for showcasing their talent through plethora of extra and co-curricular activities round the year
- **Career Services:** Campus placements at reputed Indian organizations & MNCs; facilitated with the support of alumni
- **Defence Personnel background students are encouraged to apply**
- **Scholarships** for highly meritorious students

Supported By

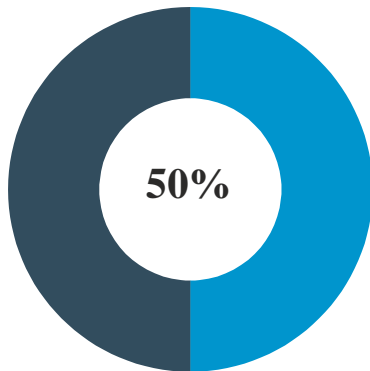


Assessment Engineering Programs

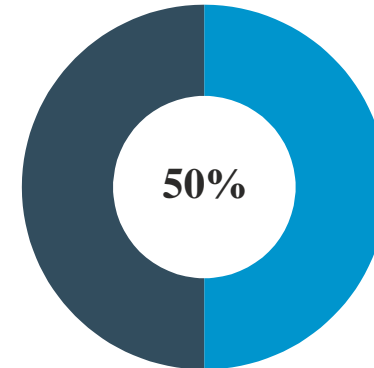
A blend of periodic written assessment and Continuous Assessment will be used for better student engagement and effective evaluation.

Components of Assessment are suggested as

Final Written and End Exam



Continuous Assessment



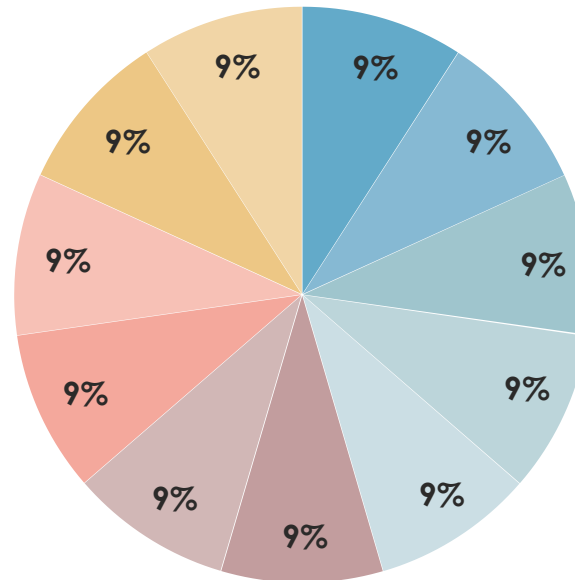
Supported By

Peace Program for holistic development

What Does Peace mean in MIT-WPU

There are 5 dimensions to our offering and from a Student's perspective, he/she can get educated on the following.

- Learning PEACE
- Practicing PEACE
- Living in PEACE
- Sharing & Spreading PEACE
- Securing PEACE



- Peace in the Self
- Peace in Communication
- Peace in the Family
- Peace in Heritage
- Peace in Nature
- Peace in Scriptures
- Peace in Business
- Peace in Entrepreneurship
- Peace in Society
- Peace in Action
- Peace in Governance

Supported By

Peace Program for holistic development- Learning Peace

Learning Peace				
PEACE IN YOU	PEACE <ul style="list-style-type: none"> • Introduction to Peace Study & Rules of Engagement • Introduction to Current Issues • Self Presentation 	MIND <ul style="list-style-type: none"> • Understanding the Self • Understanding the Motivations • Understanding Thoughts 	BODY <ul style="list-style-type: none"> • Understanding Nutrition • Understanding Exercise • Lab Work 	SPIRIT <ul style="list-style-type: none"> • Yoga • Mindfulness / Meditation • Purpose
PEACE IN HERITAGE	ROOTS <ul style="list-style-type: none"> • Introduction to Roots and Culture • Indian Peace Heritage 	ROOTS <ul style="list-style-type: none"> • Values • Ethics 	SOCIAL RESPONSIBITLY <ul style="list-style-type: none"> • Duty • Balance: Economy and Ecosystem 	COMMUNICATION <ul style="list-style-type: none"> • Understanding Verbal Communication • Non Verbal Communication
PEACE IN COMMUNICATION	COMMUNICATION <ul style="list-style-type: none"> • Assertiveness • Negotiation • Conflict Resolution 	THOUGHT <ul style="list-style-type: none"> • Critical Thinking • Heroic Acts and Heinous Crimes (biography) 	EXPRESSION <ul style="list-style-type: none"> • Art • Film • Music • Dance 	DELIVERY <ul style="list-style-type: none"> • Performance Creation • Spoken Word (Slam Poetry)

Supported By

Peace Program for holistic development - Practicing Peace

Practicing Peace				
PEACE IN SCRIPTURE	SCRIPTURE STUDY •Hinduism •Buddhism	SCRIPTURE STUDY •Jainism •Sikhism	SCRIPTURE STUDY •Islam •Bahai	SCRIPTURE STUDY •Judaism •Christianity
PEACE IN FAMILY	INTRO •Family System •Responsibility	FAMILY LAW •Family Legacy •Gender Equality	WELL-BEING •Child •Education	SKILLS •Parent •Empowerment
PEACE IN HUMANITY LIVING IN PEACE	HUMAN THEMES •Passion •Compassion •Tolerance	HATE •Terrorism •Vigilance •Cost of Hate	CONFLICT STUDIES •Mediation •Sustainable Peace	HEALING •Human Rights •Reconciliation

Supported By



Peace Program for holistic development - Sharing & Spreading Peace

Practicing Peace				
WORLD PEACE	PEACE IN DEVELOPMENT • Town / City Planning • Renewable Energy	PEACE ECONOMICS • Cost of Harmony • Interacting Policies	PEACE IN OCCUPATION • Corporate Governance • Strategic Management • Business Development	PEACE IN PUBLIC GOVERNANCE • Public Governance • Civics
PEACE FOR TOMORROW	INNOVATION • Grass Root Innovation • Project Work	SUSTAINABILITY • Harmony in Nature • Project Work	AGROCHOLOGY • Sustainable Farming • Community Development	PEACE IN NATURE • Ecology • Integrated Resource Management
PEACE IN SOCIAL ENTREPRENEURSHIP	SOCIAL ENTREPRENEURS HIP • NGO Study • Outbound	INDIVIDUAL SOCIAL RESPONSIBILITY • Agriculture • Water • Women Issues	INDIVIDUAL SOCIAL RESPONSIBILITY • Child • Food • Shelter	INDIVIDUAL SOCIAL RESPONSIBILITY • Health & Safety • Sanitation
PEACE IN ACTION SECURING PEACE	ARMED FORCES • Navy • Army • Air Force	ASSESSMENT • SOP For NGO Assessment • Project Work	OUTREACH • Social Media • Workshop	TECHNOLOGY • Developing Technology for Sustainable Program • Delivery Techniques

Supported By





Dr. Vishwanath Karad
**MIT WORLD PEACE
UNIVERSITY** | PUNE
TECHNOLOGY, RESEARCH, SOCIAL INNOVATION & PARTNERSHIPS

Social Mission

- **Pioneering platforms built by MIT for Social Revolution and Transformation are**
 - **Bharatiya Chhatra Sansad**
 - <http://www.bharatiyachhatrasansad.org/>
 - **National Teachers' Congress**
 - <http://www.nationalteacherscongress.com/>
 - **National Women's Parliament**
 - <http://nationalwomensparliament.org/>

Supported By





Dr. Vishwanath Karad
**MIT WORLD PEACE
UNIVERSITY** | PUNE
TECHNOLOGY, RESEARCH, SOCIAL INNOVATION & PARTNERSHIPS

Engineering Programs Offered

Program	Seat	Program	Seat
Diploma in Civil Engineering	40	Integrated B. Tech Civil Engineering	20
Diploma in Computer Engineering	90	Integrated B. Tech Computer Engineering And Technology	30
Diploma in Mechanical Engineering	90	Integrated B. Tech Mechanical Engineering	30
Diploma in Electronics And Communication Engineering.	40	Integrated B. Tech Electronics And Communication Engineering.	20

Supported By





Dr. Vishwanath Karad
**MIT WORLD PEACE
UNIVERSITY** | PUNE
TECHNOLOGY, RESEARCH, SOCIAL INNOVATION & PARTNERSHIPS

About the Program

MIT-WPU School of Polytechnic & Skill Development, known as MIT Polytechnic is focused on providing value based knowledge, entrepreneurial skills and the aptitude required for youth to excel in their employment, or as entrepreneurs or even for them to continue their education leading to a degree program with professional excellence.

Since its inception in 1996, MIT Polytechnic (now School of Polytechnic & Skill Development), under the aegis of the world's first university for life transformation, is a leading polytechnic in the state of Maharashtra with state of the art infrastructural facilities as well as an excellent teaching faculty. Our academic programs are redefined to develop holistic and winning personalities within the students. Our core philosophy and leadership provide us with the direction necessary for a sustained vision to reach beyond excellence.

Supported By





Eligibility

To be eligible for admission to any of our course, candidates are required to meet the following criteria :

Diploma programmes

- Candidate must have passed X std. or equivalent as specified by appropriate government norms

Integrated B. Tech. Programmes

- Candidate must have passed X std. or equivalent as specified by appropriate government with minimum 60 % marks (55% for reserved category)

- ***SELECTION CRITERIA***

Merit list based on X std. or equivalent examinations

Supported By





Dr. Vishwanath Karad
**MIT WORLD PEACE
UNIVERSITY** | PUNE
TECHNOLOGY, RESEARCH, SOCIAL INNOVATION & PARTNERSHIPS

Teaching Scheme

- ❖ Trimester Pattern: 3 trimester in a Year
- ❖ Curriculum is based on Bloom's advanced taxonomy
- ❖ Maximum 7 subjects per trimester
- ❖ Each subject consists of five units
- ❖ Each subject will have 10 Practical
- ❖ Outcome based learning: POs, COs, LOs, PrOs
- ❖ List of reference books

Supported By



Assessment Scheme

- ❖ One mid term theory exam
- ❖ End term exam of 50 marks for theory subject, question paper pattern is given in curriculum.
- ❖ Every subject has CCA, LCA or both
- ❖ CCA: Class Continuous Assessment 50 marks
 - ❖ Attendance=5 marks, Mid term exam=20 marks, Assignment=10,
 - ❖ Micro project= 15
- ❖ LCA: Lab continuous Assessment 50 marks
 - ❖ Attendance=5 marks, Term Work=20 marks, End term exam(Th/Pr)= 25 marks

Supported By

Academic Evaluation Policy

Passing Criteria	50% marks in appeared subjects or CGPA = 5			
Attendance Criteria	Minimum 75% Attendance is mandatory to grant the Term for each course/subject		➤	Above 90 % = 5 Marks
			➤	85% – 90 % = 4 Marks
			➤	80% - 85% = 3 Marks
			➤	75 % - 80 % = 2 Marks
ATKT Rule	Failure in 1/3 rd subjects of appeared subjects is allowed			
Peace Component	Peace subject for 5 trimester with 2 credits in each trimester			
Grading Pattern	O (Outstanding) 10	A+(Excellent) 9	A(Very Good) 8 B+(Good) 7 B(Above Average) 6	C(Average) 5 P (Pass) 4 F(Fail) 0 Ab (Absent) 0
Degree To be Awarded	On Final year Marks			

Supported By

Guest Lectures Conducted By

COURSE	NAME OF EXPERT	INDUSTRY	TOPIC
Computer Engineering	Dr.Vijay Gokhale	Director, Sunbeam Technologies,Pune	Design Of Linux Operating System
	Dr.Sanjay Tungar	Cyber Cell ,Commissioner Office,Pune	Cyber Crime Expert
	Shrirang Karandikar	Founder , AlgoAsylum	Technical Trainer
Mechanical Engineering	Mr. Paranjape P. A	TATA Power	Thermal Power Plants
	Mr. Ashsish Taywade	Freelancer	Employability Enhancement
	Mr. Anand Chambhare	TATA Motors	Supply chain Management

Guest Lectures Conducted By

COURSE	NAME OF EXPERT	INDUSTRY	TOPIC
Civil Engineering	Mr. V. G. Pandey	Accounts Head Public Works Department Pune	Accounts in PWD
	Mr. D.S. Satpute	D. S. Surveyor Pune	Total Station
	Mr. Viraj Buttepatil	Director, Butte Patil Constructions	Advance Construction Technology
Electronics & Telecommunication Engineering	Mrs. Kalpana	Innovative Technologies	Embedded Systems & Applications
	Mr. Sachin Kadam	S &K associates	PLC

Supported By



Dr. Vishwanath Karad
**MIT WORLD PEACE
UNIVERSITY** | PUNE
TECHNOLOGY, RESEARCH, SOCIAL INNOVATION & PARTNERSHIPS

Industrial Visits

- C-DAC Pune
- Persistent Systems Hinjewadi
- India First Robotics
- Water Treatment Plant
- Chaskaman Dam
- Ready Mix Concrete Plant
- Biomedical Waste Treatment Plant
- Bajaj Auto
- HUSCO Hydraulics

Supported By





Dr. Vishwanath Karad
MIT WORLD PEACE
UNIVERSITY | PUNE
TECHNOLOGY, RESEARCH, SOCIAL INNOVATION & PARTNERSHIPS

Notable Alumni



Pooja Pathak
CEO, Babuda
Batch 2007-2008



Gaytri Deshpande
Global Project Engineer
Kalpana Chawla Award Winner
Batch 2006-2009



Sagar Hotchandani
Microsoft Corporation
Seattle Washington
Batch 2008-2009



Tejas Ambdekar
Project Leader,
PARI Robotics
Batch 2003-2006



Darshan Jadhav
Design Manager
Godrej & Boyce
Batch 2007-2008



Mr. Viraj Butte Patil
Director, Butte Patil Constructions
Batch 2005-2008



Mr. Vivek Bagul
Sr. Manager, Force Motors
Batch 2007-2008



Mr. Rushikesh Deshpande
Director, Parin Constructions
Batch 2005-2008

Supported By





Dr. Vishwanath Karad

**MIT WORLD PEACE
UNIVERSITY** | PUNE

TECHNOLOGY, RESEARCH, SOCIAL INNOVATION & PARTNERSHIPS

THANK YOU