

॥ विश्वशान्तिर्ध्रुवं ध्रुवा ॥

# Photography

*WPU School of Photography*

Explore. Express. Transform.



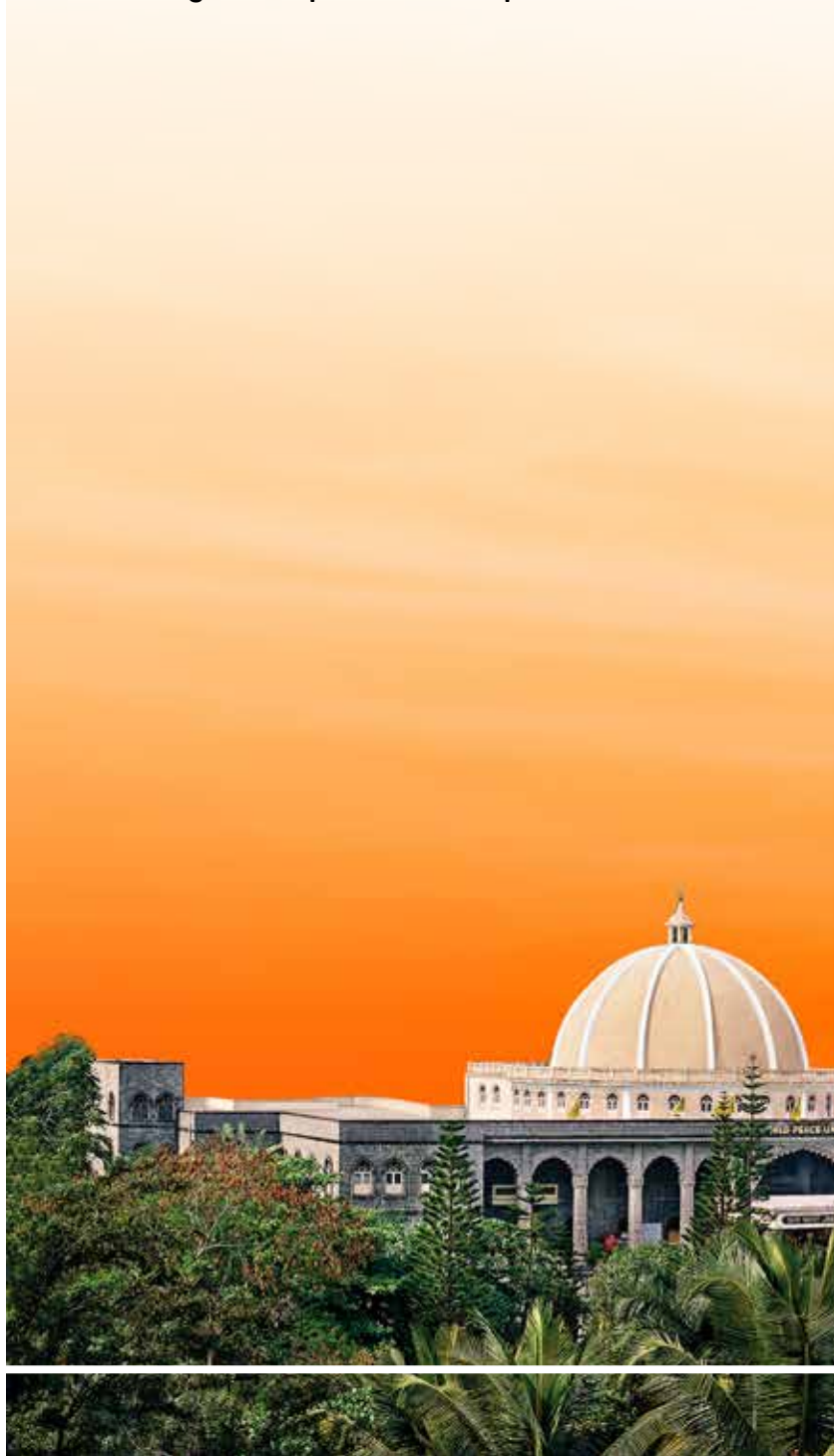
**Admissions 2024**

[mitwpu.edu.in](http://mitwpu.edu.in)

# MIT World Peace University (MIT-WPU)

---

MIT World Peace University (MIT-WPU) is a prestigious world-class institution for higher education in India, boasting a remarkable 40-year legacy dedicated to fostering excellence in academics. With a global alumni network comprising over 100,000 professionals, MIT-WPU has consistently delivered outstanding educational outcomes. The institution offers over 150 undergraduate and postgraduate programmes that are thoughtfully designed to strike a balance between theoretical foundations and practical application. The pedagogical approach prioritises experiential learning, empowering students to translate knowledge into real-world skills. This is facilitated through immersive internships and invaluable mentor-mentee insights that serve as catalysts for personal and professional growth.



# University Highlights

---

- ◆ **100,000+** Alumni Globally.
- ◆ **1600+** Companies visited for placement.
- ◆ International Students from **30** countries.
- ◆ Merit-Based Scholarship worth **Rs. 50 Cr.**
- ◆ Highest University Package: **Rs. 51.36** Lakhs CTC.
- ◆ Outcome based learning aligned with Bloom's taxonomy.
- ◆ Experiential learning through Rural, National & International Immersion and Co-creation Programmes.
- ◆ Lateral learning through events like RIDE (Research, Innovation, Design, Entrepreneur-ship), SLDP (Social Leadership Development Programmes) & more.
- ◆ The curriculum is taught by international academicians, industry practitioners, and alumni.
- ◆ Practical and real-life experience with Industry sponsored Capstone projects, Internships, & Seminars.
- ◆ Holistic development through participation in Yoga, Patriotism, Peace, Agriculture & Spiritual programmes.



# Why a Degree Programme in Photography from MIT-WPU?

The Photography degree programme at MIT-WPU is intricately designed to provide students with the essential skills required to thrive in today's dynamic visual landscape. This comprehensive programme delves into crucial facets of photography, seamlessly integrating technical proficiency, artistic expression, and industry relevance. Developed in collaboration with accomplished photographers, visual artists, and industry experts, the curriculum strikes a perfect balance between theoretical foundations and practical insights, ensuring a robust foundation for a successful career in the field.

## Key Features:

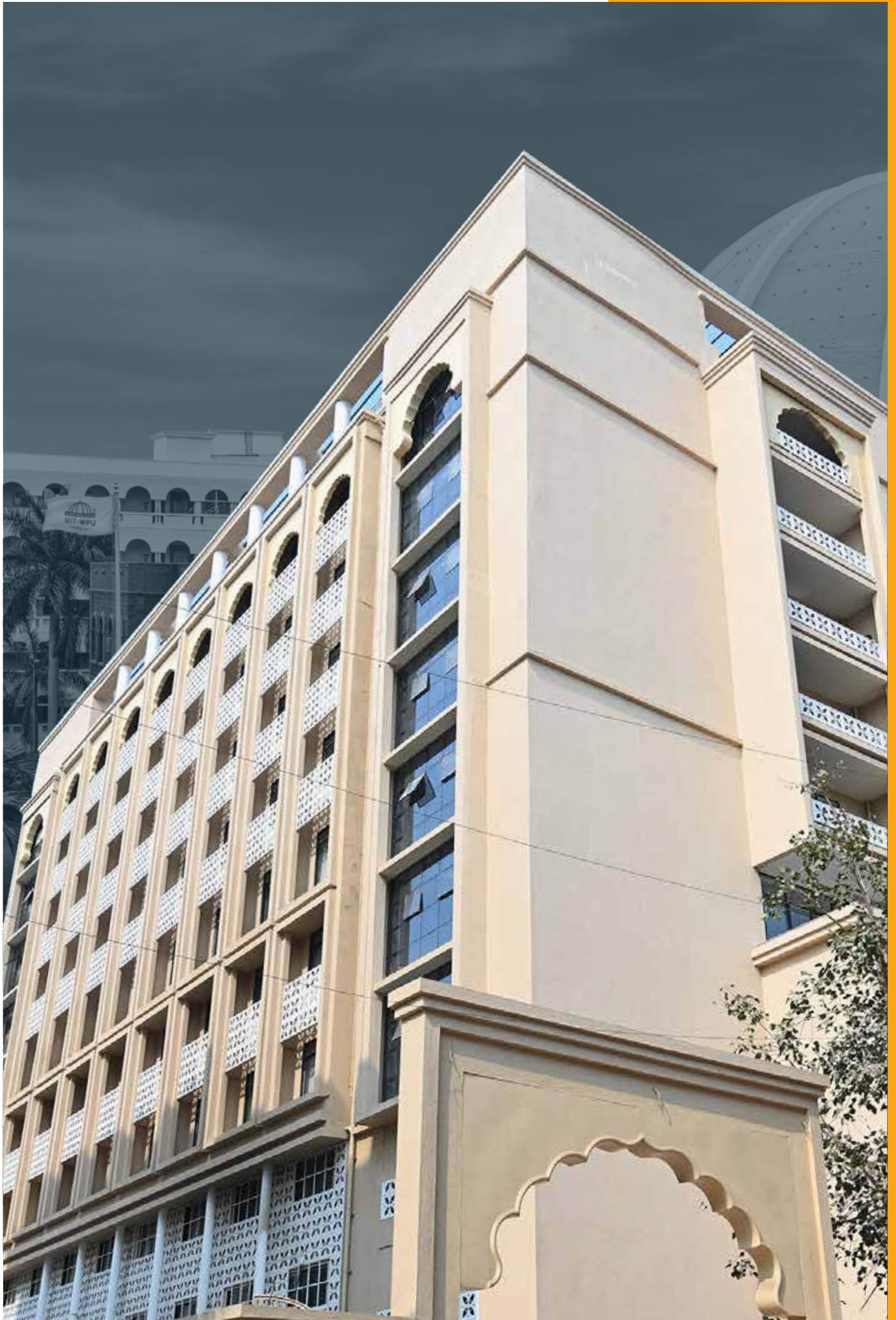
- **Holistic Insight:** The programme provides a 360-degree view of photography, covering technical, artistic, and industry-related aspects.
- **Collaborative Development:** Developed in collaboration with experts, ensuring up-to-date knowledge and industry alignment.
- **Hands-On Experience:** Emphasis on practical projects, workshops, and real-world assignments for a well-rounded learning experience.
- **Innovation and Entrepreneurship:** Fosters a commitment to innovation, entrepreneurship, and critical thinking.
- **Preparation for Industry Challenges:** Students are prepared for the evolving photography landscape through exposure to real-world scenarios.
- **Leadership Focus:** The programme aims not just to produce skilled photographers but to nurture future leaders and innovators in the photography space.

With a focus on merging artistic vision with technical excellence, MIT-WPU Photography degree programme aims to cultivate students who will not only excel in capturing moments but also play a pivotal role in shaping the future of visual narratives.

## Programmes Offered

---

- ◆ BA Photography
- ◆ Diploma in Photography
- ◆ MA in Commercial Photography





# School of Photography

---

The School of Photography at MIT-WPU is committed to fostering excellence in photography with a strong emphasis on integrity and ethics. These programmes are curated and designed by experts, integrating theoretical lectures, tutorials, industry-driven assignments, and practical applications. With state-of-the-art facilities, including the guidance of experienced faculty, computer labs, and studios, the department serves as a cornerstone for aspiring photographers. It provides a solid foundation for quality education in the field of photography, ensuring students are well-equipped with the skills and knowledge necessary for success in this dynamic and creative industry.



# Programme Highlights



Well-equipped audio-visual labs provide essential hands-on experience and exposure to the latest technologies in the field.



Over 100 student-led clubs catering to varied interests offer students ample opportunities to engage in extracurricular activities and enhance their overall learning experience.



Immersion programmes offer students the chance to broaden their perspectives, understand different cultures, and gain a deeper understanding of global dynamics.



Regular study tours and industry visits offer firsthand insights into the practical aspects of working in the photography industry.



Internships offer hands-on experience and the chance to develop skills and knowledge in a real-world setting. MIT-WPU offers 100% assistance to students in finding internships with top agencies, such as Ogilvy, News18, and HT Digital.



Engaging seminars and workshops provide a platform to learn about the latest trends, issues, and technologies from experts in the field.



Encouraging entrepreneurship in students through funding, mentoring, and network connection in MIT-WPU Pune Technology Business Incubator (TBI).

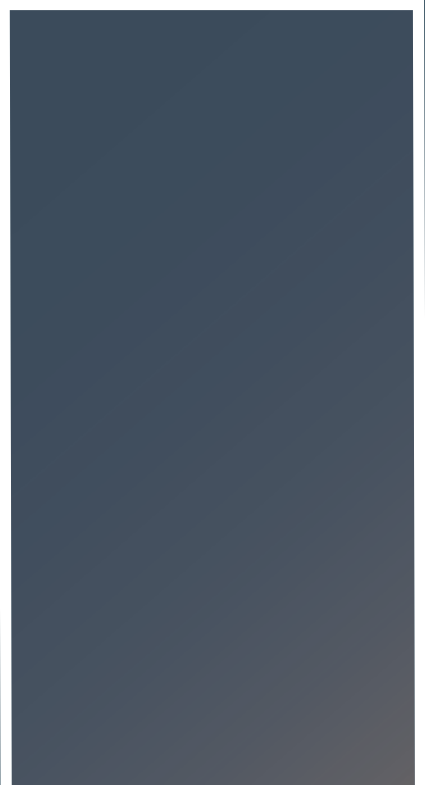


Samvaad, a lecture series by industry experts, offers a valuable learning opportunity for media students to gain insights from experienced professionals in the photography field and learn from their experiences.



“

**To express their  
originality and create  
powerful visual  
communication**



## Director's Message

---

The MIT-WPU School of Photography is dedicated to imparting quality education in photography and providing a platform for budding photographers to give expression to their originality and create powerful visual communication.

MIT-WPU DoP was started with the sole aim of reaching out to a large number of aspirants who wish to pursue photography as a career or a hobby. The Department provides a platform for photographers to give expression to their originality and create powerful visual communication.

We desire to reach out to many aspirants who wish to pursue photography as a career or hobby. Our endeavour is to cater to the needs of photography enthusiasts from all walks of life and across all age groups because art has no limits!

**Prof. Ashwini V. Ghaisas**

Director,  
School of Photography







## Academic Programmes



# BA Photography



**Duration - 3 years\***



**Fees - ₹ 2,80,000/- PA**



## **Specialisations**

- ◆ Fashion & Portrait Photography
- ◆ Advertising & Commercial Photography
- ◆ Nature & Wildlife Photography
- ◆ Photojournalism & Documentary Photography
- ◆ Image Post Processing & Designing
- ◆ Fine Art Photography

The BA in Photography degree programme at MIT-WPU is a comprehensive, skills-based programme that prepares students for careers in professional photography through a hands-on, experiential learning approach. The programme equips students in all aspects of photography, providing them with academically rigorous and creatively challenging courses. Students are trained in the use of lighting tools, digital camera systems, digital output systems, video controls on DSLRs, and image editing and design software such as Lightroom and Photoshop. The cross-platform philosophy, combined with the experiential learning provided by professional photographers and instructors, offers a unique and innovative technical education that helps students develop their own creative style and unique visual problem-solving skills. Modules include communication skills, peace studies, soft skills, environmental science, and other areas to ensure the holistic development of students.

# Diploma in Photography



**Duration - 1 year**



**Fees - ₹ 1,30,000/- PA**



## **Career Opportunities**

- ◆ Self-Employed Freelance Photographer
- ◆ Visual Artist and Illustrator
- ◆ Photographers in the Ecommerce Sector
- ◆ Graphic Designers
- ◆ Photographers in the Publication & Production Sector
- ◆ Event Photographer
- ◆ Photographers for Magazines & Newspapers
- ◆ Photojournalists
- ◆ Art Trainers & Educationists

The Diploma in Photography at MIT-WPU is a one-year, part-time programme that offers a comprehensive foundation in the technical, creative, scientific, and aesthetic dimensions of photography. Covering a range of genres such as advertising, fashion, wildlife, medical photography, and more, this programme provides students with practical experience through workshops and guest lectures conducted by experienced photographers in each genre. Demonstrations in studios and field settings further enhance practical learning. The overarching goal of the programme is to equip students with the skills to practice photography with proficiency and navigate real-life challenges in the field.



# Academic Programmes



# MA in Commercial Photography



**Duration - 2 years\***



**Fees - ₹ 2,05,000/- PA**



## **Specialisations**

- ◆ Advertising & Commercial Photography
- ◆ Photojournalism & Documentary Photography
- ◆ Fashion & Editorial Photography
- ◆ Contemporary Portrait Photography

Master the art of commercial photography with the M.A. programme at MIT-WPU. Our program equips you with the theoretical knowledge and hands-on experience to excel. You will delve into visual storytelling, technical finesse, and market adaptation. Our holistic curriculum explores the evolution of photography, studio work, visual literacy, and branding strategies. Embracing innovation and adaptability, we foster a community of versatile professional photographers prepared to thrive in the ever-changing industry. Elevate your skills and launch your career in commercial photography.





# Infrastructure at the School of Photography

---

The School of Photography at MIT-WPU is equipped with three well-appointed studios. The main studio, covering an expansive area of 24 feet x 60 feet, accommodates two elaborate setups with two to three smaller setups. It is furnished with the latest industry-standard lighting equipment, making it an ideal space for students to create custom sets for their shoots.

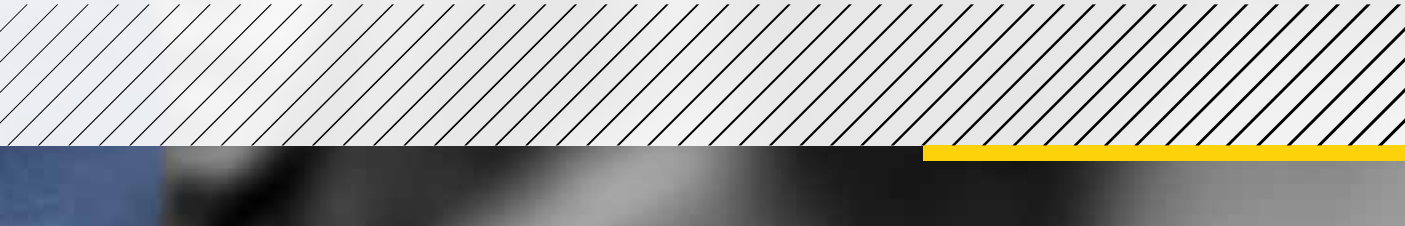
Complementing the main studio are two additional studios, each measuring 16 feet x 30 feet, specifically designed to facilitate professional shoots. Additionally, the department features a fully air-conditioned computer lab equipped with the latest post-processing software.

For further resources, the department's library houses an extensive collection of both technical and non-technical books on photography. It also offers a diverse selection of national and international newspapers, magazines, and journals, providing students with a comprehensive repository of knowledge and insights in the field.

## CLICK FOTO FEST

---

CLICK-FOTO FEST is an annual photography festival organised by the School of Photography at MIT-WPU. The festival features pan-India competitions, guest lectures, workshops, and exhibitions highlighting the finest work from the department's students. Participants are encouraged to submit their top creations across various categories and photography genres. The most outstanding entries, meticulously assessed by a panel of esteemed jury members, are showcased in the CLICK Exhibition and honoured with awards.



# Eligibility & Selection Criteria

## Diploma Programme

- ◆ Minimum 50% aggregate score in Class 10th or equivalent from Govt. Approved Institution.
- ◆ The selection process for the programme is based on MIT-WPU CET PI (Personal Interaction) 2024 score.

## Undergraduate Programme

- ◆ Minimum 50% aggregate score in 10+2/Class 12th or in equivalent examination with English subject (at least 45% marks, in case of Reserved Class category candidate belonging to Maharashtra State only)  
or
- ◆ Minimum 50% aggregate score in 3-year Diploma from any Govt approved Institution or equivalent with English as a subject.
- ◆ The selection process for the programme is based on MIT-WPU CET Personal Interaction (PI) for eligible candidates.

Note: All International Baccalaureate (IB) students are required to score a minimum of 24 points for six subjects.



# Scholarships

MIT-WPU offers scholarships to meritorious students based on their performance in National/State Level Entrance tests and the MIT-WPU CET Examination for the academic year 2023-24. These scholarships are applicable throughout the programme\*.

## Merit Scholarship Categories:

- ◆ Dr. Vishwanath Karad Merit Scholarship
- ◆ MIT-WPU Merit Scholarship
- ◆ Scholarships for Elite Sports Persons
- ◆ Scholarship Awarded to the wards of MIT-WPU/ MAEER's staff members and Alumni

### \*Terms & Conditions:

- ◆ All Scholarships are awarded on a First Come First Serve basis.
- ◆ All Scholarships are awarded as fee adjustments.
- ◆ To continue the scholarship for the entire duration of the programme,
  1. A minimum level of academic score has to be maintained at an 8 CGPA across all semesters
  2. Attendance is to be maintained at a minimum of 80 per cent
  3. There should be no disciplinary action against the student.

### For more information visit

[mitwpu.edu.in/scholarships](http://mitwpu.edu.in/scholarships)

## BA Photography

Scholarship for AY 2024-25	Dr. Vishwanath Karad Scholarship (100%)		MIT-WPU Scholarship I (50%)		MIT-WPU Scholarship II (25%)	
Name of programme/ Specialisation	X <sup>th</sup> Aggregate Score	XII <sup>th</sup> Aggregate Score	X <sup>th</sup> Aggregate Score	XII <sup>th</sup> Aggregate Score	X <sup>th</sup> Aggregate Score	XII <sup>th</sup> Aggregate Score
BA Photography	90 & Above	85 & Above	88 & Above	83 & Above	85 & Above	80 & Above

Note: Student will have to qualify both the criteria i.e. X<sup>th</sup> Aggregate Score and XII<sup>th</sup> Aggregate Score for availing the scholarship.

# Testimonials

## Here's What Our Students Have to Say

It gives me great pleasure to say that I have completed my graduation from the School of Photography, MIT-WPU. The relationship between faculties and students is very cordial, which gave me an opportunity to excel in my area of interest. The three years spent here were splendid and have helped me to grow better professionally & personally. The faculties leave no stone unturned to provide us with the best experience, be it for on-field or off-field activity. I would like to thank all the faculties and staff for making me a better person as well.



**Surbhi Baldeva**

MIT-WPU has given me the opportunity to shape my future, the facilities it has to offer are enormous, and our faculty and staff members are one of the kindest and help us with every difficulty. The peace studies subject makes us self-reflective and understand ourselves.



**Prajeen Ravade**

The infrastructure of MIT-WPU and its campus life is greatly appreciated by the students. The events that take place help students to grow as individuals and help with their confidence. The faculty of the School of Photography is very helpful and guides the students in a constructive way that enables students to unlock their true potential.



**Aayushi Vaidya**



# Events @ MIT-WPU

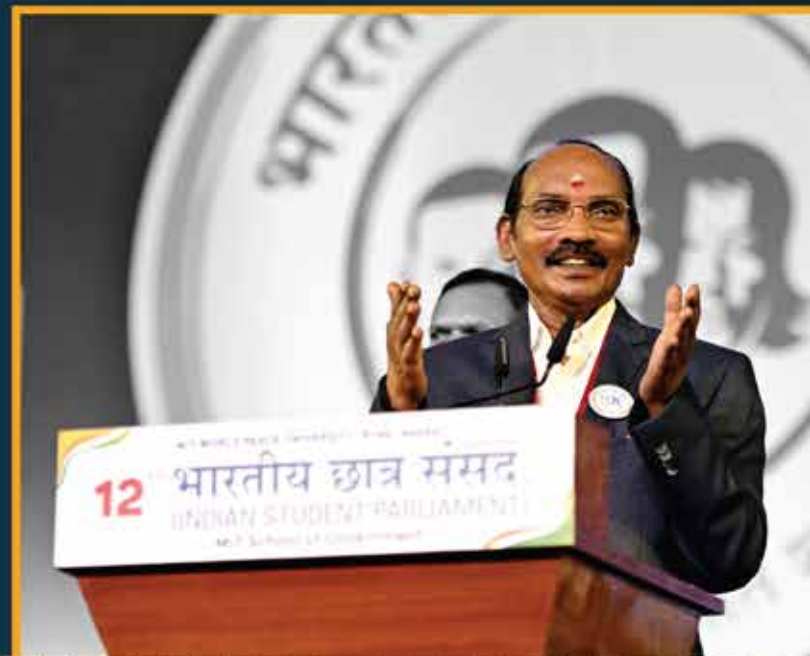


## Bharatiya Chhatra Sansad Empowering Youth for Change

A brainchild of Shri. Rahul V. Karad and flagship initiative of MIT-WPU, Bharatiya Chhatra Sansad (BCS) is a nationally recognised initiative empowering youth in India's political landscape. Serving as a non-partisan platform, BCS engages young minds in debates, discussions, and addresses by distinguished personalities, fostering awareness of the socio-political landscape. Acknowledging the contributions of young leaders, sarpanches, and activists, BCS, with participation from 25,000 institutes nationwide, empowers youth to actively shape India's future in governance and administration.

## R.I.D.E. Igniting Innovation and Entrepreneurship

R.I.D.E. stands out as a unique educational initiative by MIT-WPU, fostering entrepreneurship beyond academics. This 5-day event, attracting over 10,000 students, showcases cutting-edge research, design thinking, and innovation across diverse domains. With 100+ startups and 50 venture capital experts, R.I.D.E. provides a real-world startup context, encouraging unconventional thinking and exposing participants to transformative dynamics and market trends.



# Rural Immersion Programme

The rural immersion programme of MIT-WPU provides students with a unique educational experience. Through village visits, students engage in hands-on projects such as optimising irrigation, water conservation, waste recycling, and solar power integration. This immersive learning develops critical thinking, problem-solving skills, and community awareness, fostering a profound understanding of rural dynamics and innovative solutions.



## Other MIT-WPU Events

- ◆ Design Xpo
- ◆ Aarohan
- ◆ Kala Mehfil
- ◆ Hackathon
- ◆ National Conference on Media and Journalism
- ◆ Abhivyakti
- ◆ TEXEPHYR
- ◆ Tesla
- ◆ Techogenesis
- ◆ RoboCon
- ◆ Science Expo
- ◆ World Parliament of Science, Religion and Philosophy
- ◆ Bharat Asmita National Awards
- ◆ National Women's Parliament
- ◆ International Symposium on Law and Peace
- ◆ Vidhi-Manthan
- ◆ Peace Marathon
- ◆ Sports Summit
- ◆ Social Leadership Development Programme (SLDP)
- ◆ And many more...

# MIT-WPU Student Clubs

MIT-WPU is a vibrant hub for student involvement, boasting over 100 clubs spanning cultural, social, sports, co-curricular, and NCC/NSS categories. Such student-led clubs provide students with a platform for active participation, connection-building, and leadership skills development.

- ◆ The Innovation Club is a hub for entrepreneurial and innovative events and workshops
- ◆ The Art and Photography Club brings together aspiring artists for creative expression
- ◆ The Sports Club, orchestrating spirited sporting events and activities
- ◆ The Cultural Club celebrates diversity and fosters cultural exchange
- ◆ Aatman- The sole Mental Health Club led by Psychology students, promoting well-being
- ◆ Team Dart- A motorsports team participating annually in the Rally Car Design Challenge (RCDC)

These clubs excel in national and international competitions, amplifying the dynamic MIT-WPU experience, nurturing leadership, and fostering holistic personal growth. Active participation in these diverse student clubs empowers students to optimise their time, enhance their skills, and contribute purposefully to the community.







# Life @ MIT-WPU





# Peace Studies: Fostering Holistic Growth

Understanding the importance of inner and social peace and conflict management skills is crucial in today's world. MIT World Peace University has adopted UNESCO's core vision of 'Building Peace in the Minds of Young Men and Women' as its guiding ethos.

The university offers a mandatory course of peace studies that lays the foundation for spiritual peace and harmony. It explores new ideas and practices from various cultures to tackle the challenges of global peace and sustainable development. The university also plans to introduce an advanced postgraduate degree programme in Peacebuilding and Conflict Management that offers state-of-the-art learning opportunities to study traditional and contemporary pedagogies of peacebuilding and conflict management.

The main objective of this course is to prepare students to become agents of social change and genuine global citizens. It trains them in non-violent communication to promote peace and prevent violence in communities and workplaces. Furthermore, the peace studies module also acquaints students with diverse yoga practices that enrich their cognitive prowess and information base, refining critical thinking and enhancing their overall personality. This interdisciplinary course, developed with input from scholars and practitioners worldwide, helps students build knowledge of India's spiritual and cultural ethos. Additionally, the course covers essential conflict management knowledge and skills that are in high demand in today's corporations.



# Admission Process



1

Start application at admissions.mitwpu.edu.in by filling enquiry

2

Receive Login ID and Password

3

Fill Application Form and submit form till last page (Pay application fees for entrance examination- Rs.1500)

4

Receive relevant Link for MIT-WPU CET process

5

Appear for MIT-WPU CET process (Date will reflect on Student Dashboard/Website)

6

Check result on Application Student Dashboard, once results are declared (Dates notified on email)

7

Receive provisional offer of admission (if selected, on registered email)

8

Complete Programme Fee Payment (1st Instalment)

9

Complete all sections of Registration Portal (Payment/ Personal/Education/Documents)

10

Receive Student PRN (Permanent Registration Number) on registered email

11

Original Document Submission

12

Welcome to MIT-WPU!



Dr. Vishwanath Karad  
**MIT WORLD PEACE UNIVERSITY** | PUNE  
TECHNOLOGY, RESEARCH, SOCIAL INNOVATION & PARTNERSHIPS

Call: +91-20-71177137  
WhatsApp: +91 9881492848 (Message only)  
Email: [admissions@mitwpu.edu.in](mailto:admissions@mitwpu.edu.in)  
Website: [mitwpu.edu.in](http://mitwpu.edu.in)  
Address: MIT-WPU, Kothrud, Pune.

Scan to Apply



Disclaimer :This brochure provides general information about the programmes. Dr. Vishwanath Karad MIT World Peace University, Pune (MIT-WPU) reserves the right to revoke, modify, add or delete one or more of the terms and conditions outlined in the brochure. MIT-WPU reserves the right to amend the provisions of the programme, eligibility, admission & scholarships without notification & as deemed fit / appropriate due to any changed circumstances.