

DEPARTMENT OF VISUAL ARTS



Since 1983

Dr. Vishwanath Karad

**MIT WORLD PEACE
UNIVERSITY** | PUNE

TECHNOLOGY, RESEARCH, SOCIAL INNOVATION & PARTNERSHIPS

**BUILT FOR CREATORS
WHO WANT TO LEAVE
A VISUAL MARK**



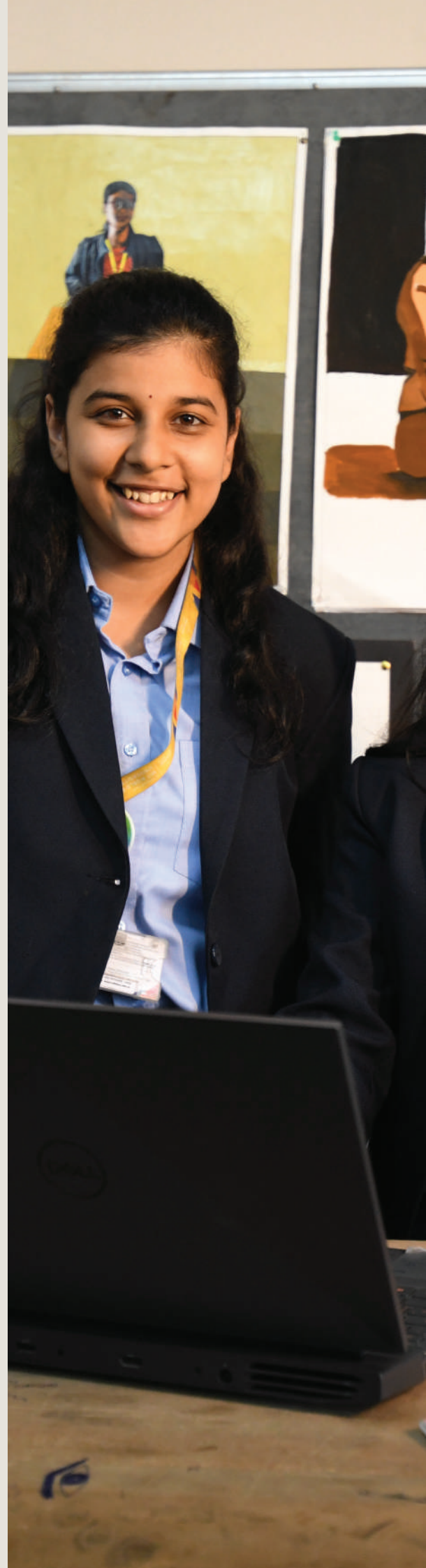
**ADMISSIONS
OPEN 2026**

School of Design

The School of Design at MIT-WPU is a hub for creative thinkers, blending theory with hands-on learning through a dynamic, experiential curriculum. Students engage in interdisciplinary projects that merge science, technology, and design to address real-world challenges. Equipped with professional tools and software, the School offers workshops, seminars, and immersion programmes that foster holistic growth and innovation, transforming imagination into reality.

Department of Visual Arts

The Department of Visual Arts offers industry-aligned undergraduate and postgraduate programmes combining traditional art principles with modern techniques. The curriculum includes rural immersions, site visits, and faculty-led projects, ensuring a strong foundation in art theory and practice. Students gain essential skills in creative thinking, time and financial management, and ethical artistic expression, preparing them for diverse careers in the creative industry.



Key Highlights

- Cutting-edge courses with additional MOOC certifications to ensure future-readiness.
- Learn from accomplished faculty with rich academic and industry experience.
- Hands-on projects and regular sessions with industry professionals.
- Focus on creative problem-solving across domains.
- Field visits and real-world learning through industry immersion.
- Six-month mandatory internship and 100% placement assistance.
- Yoga, meditation, and Peace Studies for personal and professional growth.
- Rural, national, and international exposure to broaden perspectives.

Programmes Offered

UNDER GRADUATE PROGRAMME

BFA (Applied Arts) [Hons.]*

Duration
🕒 **4 Years**

Fee Per Annum
₹ **₹1,80,000**

POST GRADUATE PROGRAMME

MFA (Applied Arts)

Duration
🕒 **2 Years**

Fee Per Annum
₹ **₹1,55,000**

PH.D PROGRAMME

Ph.D. in Visual Arts

Visit mitwpu.edu.in for more information on Ph.D. programmes



Eligibility & Selection Process



Programme	Eligibility Criteria	Selection Process
Bachelor of Fine Arts (Applied Arts) [Hons]*	Minimum 50% aggregate marks in Class 10+2/ HSC or its equivalent examination in any stream with English subject (Minimum 45% aggregate marks for candidates belonging to the Reserved Category from Maharashtra State).	Admissions will be based on the merit of MIT-WPU CET 2026 (includes Drawing Test), Personal Interaction (PI) and Portfolio Review. The Portfolio Review will be exempted if the candidate has a valid score in UCEED 2026/ PERA CET 2026/MAH-CET (Applied Arts) 2026; however, the candidate must appear for the Personal Interaction (PI) as per the schedule.
MFA (Applied Arts)	Minimum 50% aggregate marks in 4-year graduation degree in Fine Arts or allied fields from a UGC-approved institution/ university or its equivalent (minimum 45% aggregate marks for candidates belonging to the Reserved Category from Maharashtra State).	Selection Process: Admission will be based on performance in MIT-WPU CET, Personal Interaction (PI) and Portfolio Review conducted by MIT-WPU as per the prescribed schedule.

Scholarships

MIT-WPU offers financial assistance and scholarships to the meritorious students based on their academic performance in the National level/State Level entrance exams / Entrance Examination conducted by MIT-WPU (MIT-WPU CBT Score) for the academic year 2026-27.

The categories of Merit Scholarships are as below*:

1. Dr. Vishwanath Karad Merit Scholarship
2. MIT-WPU Merit Scholarship-I
3. MIT-WPU Merit Scholarship-II

*Terms and conditions:

1. Scholarships are granted on a First Come First Serve basis.
2. Scholarships are awarded as fee adjustments.
3. To maintain the scholarship throughout the programme, students must maintain a minimum academic score of 8 CGPA across all semesters, attendance of at least 80%, and a clean disciplinary record.



Scan QR Code for
More Information

Placements

Your Talent.
Our Network.



The dedicated Placement Cell, which is the Centre for Industry-Academia Partnerships (CIAP) at MIT-WPU, opens doors to multiple career opportunities for graduates. With a consistent track record of high placements, the cell connects students with prestigious firms, providing career guidance and preparing them for the professional arena. Complementing this, the eight-week Summer Internship, from late April to mid-July, integrates classroom knowledge with hands-on experience. This mandatory programme propels students into professional ecosystems, providing practical insights crucial for their careers.

Our Top Recruiters

Tech
Mahindra

TATA
ELXSI

HEADS UP FOR TAILS
THE FAMILY

EUREKA
FORBES

Stdy
Grp

lentra

Cipla

UC Urban
Company

& many more...

International University Collabs

MIT-WPU continues to foster, strengthen, and sustain global relationships. We extend intercultural networks for our students and strive towards global leadership. The initiatives include student and faculty exchange programmes, summer and winter programmes, research associations, and international immersions. We also offer semester-abroad programmes, project mentorship, extra credit programmes, and enriching intercultural activities. MIT-WPU has built partnerships with over 40 universities, including Deakin University, Macquarie University, Monash University, University of Vermont, Eastern Michigan University, and Virginia Commonwealth University, among others.

DEAKIN
UNIVERSITY

MACQUARIE
UNIVERSITY
SYDNEY AUSTRALIA

LA TROBE
UNIVERSITY

STAN VALLLEY
UNIVERSITY

TEXAS
UNIVERSITY
The University of Texas at Austin

THE UNIVERSITY
OF WISCONSIN
MADISON

VCU

Teesside
UNIVERSITY

IMT Minerva
Alma-Coronaux
Ecole Minerva

VU
VIRGINIA COMMONWEALTH
UNIVERSITY

UNIVERSITY OF
ABERDEEN

Central University
of Finance and
Economics

LIFE @ MIT-WPU



100+ student clubs at MIT-WPU stand as a vibrant community within the academic hub. The clubs give students an extraordinary opportunity to engage in a wide array of activities, events and competitions for personal and professional growth.

Hostel

MIT-WPU offers fully equipped, cutting-edge hostel facilities to students, both on and off-campus, ensuring a comfortable and secure living environment. Students can choose between twin-sharing and triple-sharing rooms, all of which come with unlimited high-speed Wi-Fi and housekeeping services. Our hostels are overseen by full-time wardens, equipped with CCTV monitoring, and feature biometric-enabled entrances to prioritize safety.

- Live food counters with fresh, hygienic, nutritious meals in multiple cuisines.
- In-house laundry facilities for student convenience.
- On-call doctors and hospital tie-ups for emergencies.
- Recreation zones with dance/yoga rooms, gym, gaming area, hangout zones, and reading room.
- Dedicated transport between hostels and campus.
- Modern facilities with housekeeping and high-speed internet.
- 24x7 campus security with biometric entrances and round-the-clock wardens.



Degree++ Courses

LEARNING BEYOND CLASSROOM

A carefully curated set of experiential learning courses designed to foster the holistic development of our students.

FIRST YEAR

→ Social Leadership Development Programme (SLDP)

Necessary exposure and opportunities to become a change leader.

→ Co-Creation

Ability to work in multi-disciplinary teams on real world complex problems.

SECOND YEAR

→ Research, Innovation, Design, and Entrepreneurship (R.I.D.E)

Pathway to innovation and entrepreneurship

→ Rural Immersion

Understand the problems of Bharat and employ technical skills to benefit society.

→ Life Transformation Center

Journey of reflection and self-discovery

THIRD YEAR

→ National Immersion Programme

Exposure to and appreciation of academic, cultural and regional diversity

→ Democracy, Leadership Governance & Public Policy

Contribute to society using critical thinking and by embracing different viewpoints

** Terms and conditions apply*

About MIT-WPU

With a rich legacy of 43+ years in fostering world-class academic excellence and over 100,000 alumni across the globe, MIT-WPU is one of the premier centres of higher learning in India. Today over 25,000 students from diverse backgrounds across the world are experiencing a 'life-transforming curriculum' across a multitude of professional academic programmes. Currently, students are pursuing education in over 150 programmes at MIT World Peace University. Located in the picturesque city of Pune, the MIT-WPU campus is surrounded by key civic infrastructure and sprawls over 65 acres of lush green campus.



SAMEERA DESWANDIKAR
TY BFA (Applied Arts)

Myself Sameera Deswandikar, am a student of MIT World Peace University and persuing 3rd year BFA (Applied Arts) at the Department of Visual Arts, School of Design. I have had an enriching experience in this university since day one. BFA (Applied Arts) is a unique blend of Visual Art & Design program. Our professors are incredibly knowledgeable and approachable. The courses offered throughout the program have truly helped me refine my skills and broaden my perspectives. I feel grateful to be a part of such a vibrant and nurturing academic community. Thank you.

Maharashtra, Goa:
8007042359,
7030963287

Rajasthan:
7030963285

West Bengal, North East:
9075038051

Bihar:
7030963289

**Delhi, NCR, Haryana,
Jammu & Kashmir:**
7774023698

**Uttarakhand, Himachal
Pradesh:**
8380023757

Uttar Pradesh:
8007042264,
9075038047

Chhattisgarh:
8605007435

Punjab:
9607132371

Jharkhand:
7030963288

Karnataka, Kerala :
8799949590

**Andhra Pradesh, Tamil
Nadu, Telangana,
Puducherry:**
9145002073

**Gujarat, Dadra and Nagar
Haveli and Daman and Diu:**
7720061620

Madhya Pradesh:
9112228871



Since 1983

Dr. Vishwanath Karad

**MIT WORLD PEACE
UNIVERSITY | PUNE**

TECHNOLOGY, RESEARCH, SOCIAL INNOVATION & PARTNERSHIPS

Call: +91 20 7117 7137
WhatsApp: +91 98814 92848 (Message only)
Email: admissions@mitwpu.edu.in
Website: mitwpu.edu.in
Address: MIT-WPU, Kothrud, Pune

APPLY ONLINE



Disclaimer: This brochure provides general information about the programmes. Dr. Vishwanath Karad MIT World Peace University, Pune (MIT-WPU) reserves the Do right to revoke, modify, add or delete one or more of the terms and conditions outlined in the brochure. MIT-WPU reserves the right to amend the provisions of the programme, eligibility, admission & scholarships without notification as & when deemed fit/appropriate due to any changed circumstances.