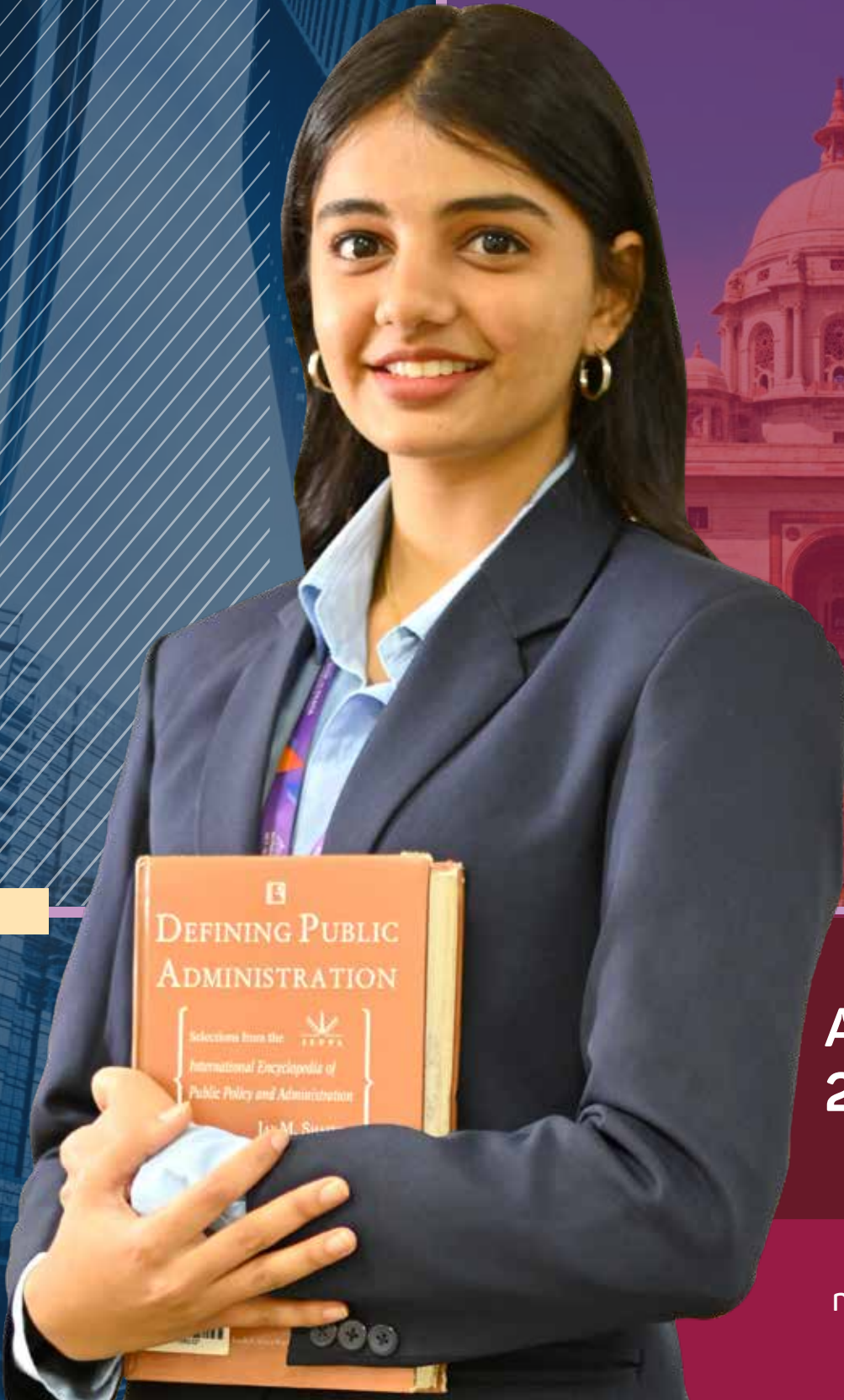


॥ विद्यशान्तिर्ध्रुवं घृवा ॥

EMPOWER, LEAD, TRANSFORM

# BA (GOVERNMENT AND ADMINISTRATION)

WPU SCHOOL OF ECONOMICS AND COMMERCE



ADMISSIONS  
2024

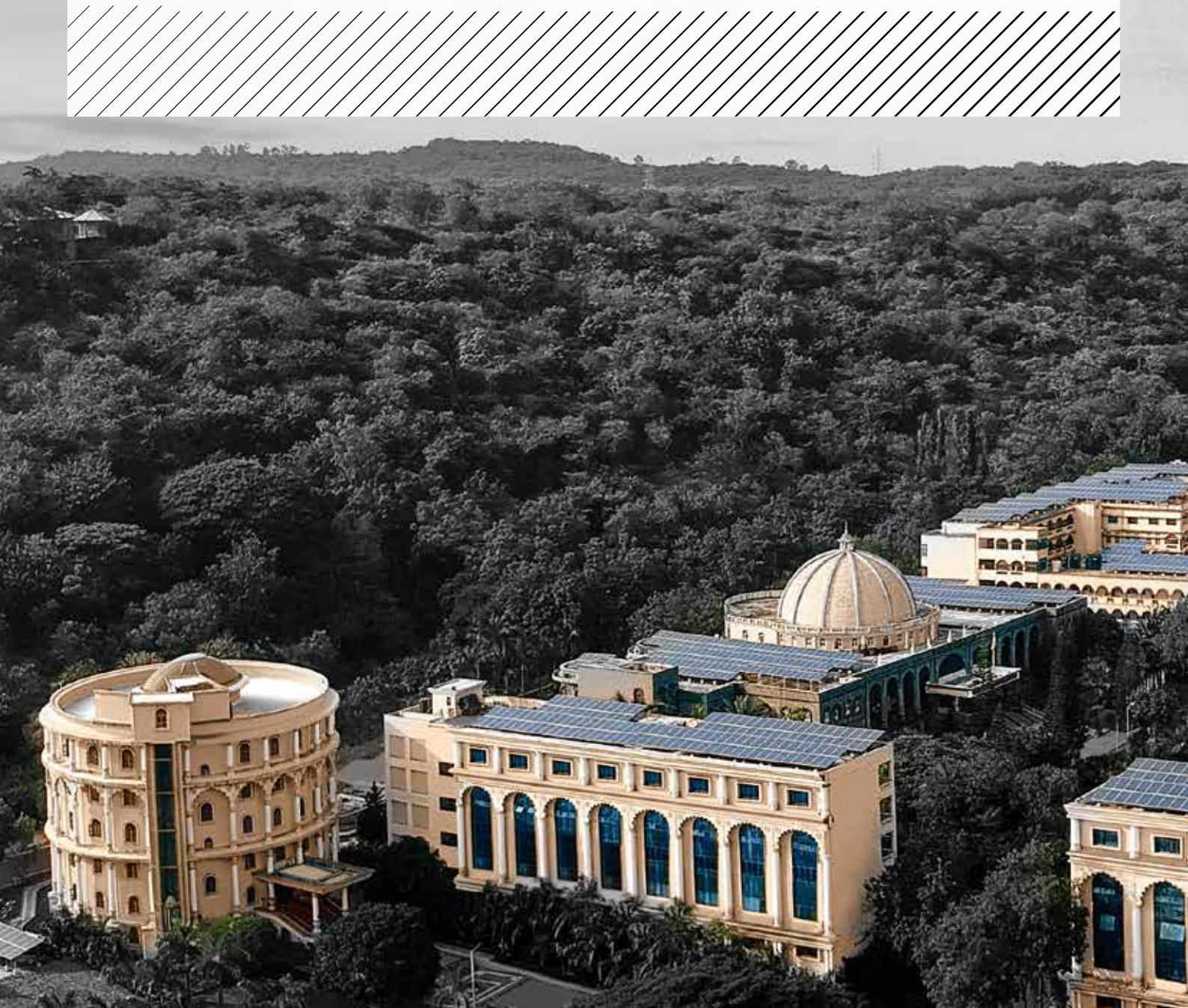
[mitwpu.edu.in](http://mitwpu.edu.in)



# MIT World Peace University (MIT-WPU)

---

MIT World Peace University (MIT-WPU) is a prestigious world-class institution for higher education in India, boasting a remarkable 40-year legacy dedicated to fostering excellence in academics. With a global alumni network comprising over 100,000 professionals, MIT-WPU has consistently delivered outstanding educational outcomes. The institution offers over 150 undergraduate and postgraduate programmes that are thoughtfully designed to strike a balance between theoretical foundations and practical application. The pedagogical approach prioritises experiential learning, empowering students to translate knowledge into real-world skills. This is facilitated through immersive internships and invaluable mentor-mentee insights that serve as catalysts for personal and professional growth.



# University Highlights

---

- ◆ 100,000+ Alumni Globally.
- ◆ 1600+ Companies visited for placement.
- ◆ International Students from 30 countries.
- ◆ Merit-Based Scholarship worth Rs. 50 Cr.
- ◆ Highest University Package: Rs. 51.36 Lakhs CTC.
- ◆ Outcome based learning aligned with Bloom's taxonomy.
- ◆ Experiential learning through Rural, National & International Immersion and Co-creation Programmes.
- ◆ Lateral learning through events like RIDE (Research, Innovation, Design, Entrepreneur-ship), SLDP (Social Leadership Development Programmes) & more.
- ◆ The curriculum is taught by international academicians, industry practitioners, and alumni.
- ◆ Practical and real-life experience with Industry sponsored Capstone projects, Internships, & Seminars.
- ◆ Holistic development through participation in Yoga, Patriotism, Peace, Agriculture & Spiritual programmes.





# Why a BA in Government and Administration Degree from MIT-WPU?

Discover a transformative academic experience with the Bachelor of Arts in BA (Government and Administration) degree at the Department of Economics and Public Policy, MIT-WPU. Our programme is uniquely crafted to address the dynamic policy landscape and align with the National Education Policy (NEP) 2020, providing students with a profound understanding of government functions.

Here's why opting for the BA (Government and Administration) degree at MIT-WPU is an investment in your future.:



## Dynamic Curriculum:

Delve into the nuances of policy-making through our comprehensive curriculum that offers insights into current challenges and equips you with the skills needed to navigate them.



## Tailored Tracks:

The BA (Government and Administration) degree takes a holistic approach, allowing students to choose between Policy and Business tracks. This customization empowers you to strategically shape your educational goals based on your professional aspirations.



## Focused Specialisations:

Whether you opt for Policy or Business tracks, our program covers a spectrum of topics, including corporate governance, data analytics, financial inclusion, digital banking, and environmental social & governance.



## Practical Exposure:

In the final semester, engage in an internship that exposes you to self-directed learning and decision-making. This hands-on experience enhances practical skills, preparing you for the challenges of real-world scenarios.



## Civil Services Exam Preparation:

Our comprehensive curriculum not only imparts theoretical knowledge but also prepares you for Central and State services examinations, broadening your career opportunities.



## Values-Centric Approach:

At MIT-WPU, we are dedicated to molding professionals with a strong foundation in values and a commitment to upholding the highest standards of integrity.



## Interactive Learning:

Our teaching methodology combines interactive learning methods with traditional classroom approaches. From fostering conceptual clarity to stimulating debates and nurturing critical thinking, we pave the way for a fulfilling career in Governance, Administration, and Public Policy.

Select the BA (Government and Administration) degree at MIT-WPU to unlock a world of possibilities, where education transcends boundaries and empowers you to make a meaningful impact on the future of

# Programme Offered

---

- ◆ BA Government and Administration (BAGA)





# WPU School of Economics and Commerce

The WPU School of Economics and Commerce specialises in educating and training students to achieve the highest standards of professionalism and practice, enhancing their career prospects. It offers a range of programmes, including undergraduate and postgraduate programmes, and Ph.D. options, covering commerce, economics, public policy, and sustainability studies. The teaching methodology is geared towards nurturing leadership and teamwork skills, preparing students for success in the corporate world. The school boasts a distinguished faculty comprising renowned academicians and corporate leaders, ensuring excellence in teaching and learning.

## Department of Economics and Public Policy

The Department of Economics and Public Policy at MIT-WPU holds the prestigious role of being the official academic trainer for Team India at the International Economics Olympiad. Guided by the department's esteemed experts, the team has garnered numerous medals for the country, both in individual and group categories, showcasing the department's commitment to excellence. The department is affiliated with esteemed organisations such as the Royal Economic Society (RES) and the Indian Economics Association (IEA). These affiliations provide students with invaluable access to national and international academic advancements and industrial developments in the field of economics. The benefits encompass internships, conferences, research opportunities, and workshops, enriching the educational journey for MIT-WPU students. At MIT-WPU, students experience holistic learning that transcends traditional classroom boundaries, ensuring a comprehensive and enriching educational experience.



# Programme Highlights



## Strong Foundation

Equips students for successful careers in Governance, Administration, and Public Policy.



## Diverse Curriculum

Thorough preparation for Central and State services examinations.



## Practical Experience

Mandatory internship for hands-on learning and practical exposure.



## Unique and Innovative

Aligned with the evolving policy landscape, including a focus on the National Education Policy (NEP) 2020.



## Flexibility

Choose between Policy and Business tracks to tailor education to career goals.



## Multi-Pronged Approach

Geared towards professional readiness for a successful career.



## Comprehensive Understanding

Delves into policy-making intricacies for a holistic approach to contemporary challenges.



## Engaging Education

Interdisciplinary approach for interactive learning across a wide range of subject areas.



**Our commitment to empowering students to tackle the nation's socio-economic challenges head-on, devising innovative solutions to uplift the economy.**

## Dean's Message

---

Greetings from the School of Economics and Commerce at MIT World Peace University.

In the pursuit of education, it is often said that true enlightenment goes beyond the mere acquisition of facts; it harmonises our lives with the entire spectrum of existence.

With the ever-changing and evolving modern-day economic scenario, it is the need of the hour to equip tomorrow's professionals with the ability to adapt to change and overcome the challenges posed. In line with this new approach, Economics and Public Policy play a central role in interdisciplinary education, a key focus outlined in the National Education Policy (NEP) 2020. At the Department of Economics and Public Policy within our esteemed School, our undergraduate and postgraduate programmes are tailored to address this need. Our curriculum is rooted in contemporary perspectives and backed by empirical research, to provide a strong foundation in theory and quantitative methods.

The programmes in the Department of Economics and Public Policy not only explore the complexities of economic theory and practice but also broaden horizons by contextualising these concepts within the larger fabric of the external world. Central to our ethos is the enhancement of economic development and social progress—a driving force that underpins our commitment to empowering students to tackle the nation's socio-economic challenges head-on, devising innovative solutions to uplift the economy.

The Public Policy programme empowers students to understand the various factors influencing policy formulation and implementation. The programme offers a holistic overview of Indian administration, governance, and policies, providing a robust foundation for success in competitive examinations.

---



---

We offer a blend of interactive learning methods with traditional classroom teaching, fostering conceptual clarity, igniting debates, and nurturing critical thought. This synergy enables students to lay the foundations for a fulfilling career in the Economics and Public Policy domain. Additionally, value-added programmes and Short-Term Certificate Courses enrich students' skill sets, aligning them with industry needs and improving their practical abilities.

As a part of MIT-WPU methodology, our unique Peace Studies course, accompanied by Yoga and meditation, exemplifies our holistic approach to education. Immersion programmes imbue experiential learning, complementing our blend of classroom instruction, project-based endeavours, and outcome-driven education.

At MIT-WPU School of Economics and Commerce, you will experience an engaging learning atmosphere paired with a curriculum that offers a strong academic foundation and a diverse array of elective courses. Through classroom interactions with your professors and fellow students, you develop your analytical skills and ability to communicate effectively. The amalgamation of coursework, internships, and community engagement fosters comfort in the professional realm while nurturing a sense of social responsibility.

With enthusiasm, I anticipate welcoming you to the enriching academic journey that the School of Economics and Commerce offers.

**Dr. Anjali Sane**

Dean—School of Economics and Commerce,  
MIT-WPU



# Academic Programme

---

## BA (Government and Administration)

The BAGA (Government and Administration) degree programme at the Department of Economics and Public Policy, MIT-WPU, is designed to align with the changing policy landscape and the National Education Policy (NEP) 2020 to familiarise students with government functions. It explores the intricacies of policy-making, providing a comprehensive understanding to tackle current challenges. The BAGA degree programme takes a holistic, multi-pronged approach, distinctly geared towards professional readiness. Students can choose between Policy and Business tracks, shaping their educational goals and professional aspirations strategically. Policy tracks help students understand diverse factors influencing policy formulation and implementation, while business tracks cover corporate governance, data analytics, financial inclusion, digital banking, and environmental social & governance. The final semester includes an internship, exposing students to self-directed learning and decision-making, enhancing practical skills. The comprehensive curriculum prepares students for Central and State Services Examinations and moulds them into professionals with the right values and a commitment to upholding the highest standards of integrity. With interactive learning methods and traditional classroom teaching, including fostering conceptual clarity, stimulating debates, and nurturing critical thinking, students lay a solid foundation for a rewarding career in Governance, Administration, and Public Policy.



Duration: 3 Years



Fee: INR 1,15,000/- PA



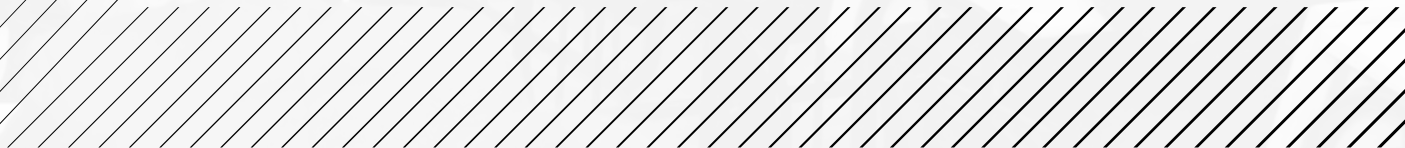
## Career Opportunities

---

- ◆ UPSC Examination: Civil Services, CAPF, EPFO
- ◆ State Services Commission Examination: MPSC, RJPSC, UPPSC, KPSC
- ◆ Staff Selection Commission (SSC): Combined Graduate Level (CGL)
- ◆ Banking Exams: Reserve Bank of India, PSU Banks, NABARD
- ◆ Defence Examinations: Combined Defence Services, SSB

## Career Avenues

---

- ◆ NGO
  - ◆ Public Policy
  - ◆ MPSC
  - ◆ Corporate Social Responsibility
  - ◆ UPSC
  - ◆ IFS
  - ◆ IRS
  - ◆ IPS
  - ◆ State Services
  - ◆ RBI
  - ◆ Government
  - ◆ Project Management Consultancy
- 

# Eligibility Criteria

---

- ◆ Minimum 50% aggregate score in 10+2/Class 12th or in equivalent examination with English subject (at least 45% marks, in case of Reserved Class category candidate belonging to Maharashtra State only)

Or

- ◆ Minimum 50% aggregate score in 3-year Diploma from any Govt approved Institution or equivalent with English as a subject.

## Selection Process:

The selection process for the programmes is based on MIT-WPU CET Entrance Exam 2024 & Personal Interaction (PI) score.







MIT WORLD PEACE UNIVERSITY

SHRI SAINT JNANESHWARA W.

# Scholarships

MIT-WPU offers scholarships to its meritorious students based on their performance in National/State Level Entrance tests and the MIT-WPU CET Examination for the academic year 2024-25. These scholarships are applicable throughout the programme.

## Merit Scholarship Categories:

- ◆ Dr. Vishwanath Karad Merit Scholarship
- ◆ MIT-WPU Merit Scholarship
- ◆ Scholarships for Elite Sportspersons
- ◆ Scholarship for Wards of MIT-WPU/MAEER's Staff Members

## \*Terms and Conditions:

- ◆ Scholarships are granted on a First Come First Serve basis.
- ◆ Scholarships are awarded as fee adjustments.
- ◆ To maintain the scholarship throughout the programme, students must maintain a minimum academic score of 8.0 CGPA across all semesters, attendance of at least 80%, and a clean disciplinary record.

For more information, please visit: [mitwpu.edu.in/scholarships](http://mitwpu.edu.in/scholarships)





# BA (Government & Administration)

Scholarship for AY 2024-25	Dr. Vishwanath Karad Scholarship (100%)	MIT-WPU Scholarship I (50%)	MIT-WPU Scholarship II (25%)
Name of programme / Specialisation	MIT-WPU CET CBT Score	MIT-WPU CET CBT Score	MIT-WPU CET CBT Score
BA (Government & Administration)	90 & Above	88 & Above	85 & Above

\*CBT Score = Online Computer Based Test conducted within the MIT-WPU CET 2024 process



# Testimonials

## Here's What Our Students Have To Say

---

I opted for the BA (Government and Administration) programme to make my dream of joining civil services come true. The curriculum, teaching pattern, and mentorship provided in the programme helped me move forward in the right direction. Continuous workshops, seminars, and lectures by eminent personalities motivated and inspired me to give my best and study in a systematic manner.



— - Arushi Shrivastav

The BA (Government and Administration) programme trained us to critically analyse various aspects of governance and provides a scope to grow independently. It also ingrained ethical values and analytical thinking skills in us. I am grateful to MIT-WPU for offering the BAGA programme for future civil servants.



— - Renuka Jadhav

After joining the BA (Government and Administration) programme, I feel I belong here. With the right course content, rigorous teaching, evaluation methodology, and experiential learning, the programme is preparing me to appear confidently in the UPSC Civil Services exams. Indeed, with its comprehensive syllabus, the programme will shape future civil servants.



— - Utkarsh Sinha

I opted for the BA (Government and Administration) programme as its curriculum is excellently designed for competitive examinations. Despite the pandemic, MIT-WPU conducted academic activities online, which I felt was extremely helpful for students in every sphere. The guest lectures by prominent personalities helped me to understand the dynamics of the Indian administration. The continuous evaluation methodology is also helpful while preparing for civil services exams.



— - Rajlaxmi Deshmukh







# Events

## Glimpses from the 13th National Level Programme to felicitate the qualifiers of UPSC exams 2021 & 2022

On the 13th to 14th of August 2022, the MIT-WPU Department of Economics and Public Policy, under the aegis of MIT-WPU School of Government, organised the 13th National Level Felicitation Programme for the qualifiers of the UPSC Exams - 2020 & 2021. The event was well-received by many qualifiers of the civil services exams as well as thousands of aspiring participants from across the nation.





## Late B. G. Deshmukh Memorial Lecture Series 2023

The Department of Economics and Public Policy at MIT-WPU, in collaboration with the Public Concern for Governance Trust (PCGT), co-hosted the 'Late B. G. Deshmukh Memorial Lecture Series' on July 28, 2022. The event centred around the theme of 'Governance and Administrative Reforms: Challenges and Opportunities.' The Special Guest of Honour for this occasion was Dr. Sanjeev Chopra, a retired IAS officer who previously served as the Director of the Lal Bahadur Shastri National Academy of Administration (LBSNAA). The keynote address was delivered by Dr. Hasmukh Adhia, another retired IAS officer who currently serves as the Hon'ble Chancellor of the Central University of Gujarat. The lecture series garnered an enthusiastic response from the student community.





# Life @ MIT-WPU









# Events @ MIT-WPU

## R.I.D.E. Igniting Innovation and Entrepreneurship

R.I.D.E. stands out as a unique educational initiative by MIT-WPU, fostering entrepreneurship beyond academics. This 5-day event, attracting over 10,000 students, showcases cutting-edge research, design thinking, and innovation across diverse domains. With 100+ startups and 50 venture capital experts, R.I.D.E. provides a real-world startup context, encouraging unconventional thinking and exposing participants to transformative dynamics and market trends.



## Bharatiya Chhatra Sansad Empowering Youth for Change

A brainchild of Shri. Rahul V. Karad and flagship initiative of MIT-WPU, Bharatiya Chhatra Sansad (BCS) is a nationally recognised initiative empowering youth in India's political landscape. Serving as a non-partisan platform, BCS engages young minds in debates, discussions, and addresses by distinguished personalities, fostering awareness of the socio-political landscape. Acknowledging the contributions of young leaders, sarpanches, and activists, BCS, with participation from 25,000 institutes nationwide, empowers youth to actively shape India's future in governance and administration.







## Rural Immersion Programme

The rural immersion programme of MIT-WPU provides students with a unique educational experience. Through village visits, students engage in hands-on projects such as optimising irrigation, water conservation, waste recycling, and solar power integration. This immersive learning develops critical thinking, problem-solving skills, and community awareness, fostering a profound understanding of rural dynamics and innovative solutions.



## Other MIT-WPU Events

- Design Xpo
- Aarohan
- Kala Mehfil
- Hackathon
- National Conference on Media and Journalism
- Abhivyakti
- TEXEPHYR
- Tesla
- Techogenesis
- RoboCon
- Science Expo
- World Parliament of Science, Religion and Philosophy
- Bharat Asmita National Awards
- National Women's Parliament
- International Symposium on Law and Peace
- Vidhi-Manthan
- Peace Marathon
- Sports Summit
- Social Leadership Development Programme (SLDP)
- And many more...



# Rural Immersion Programme

## Bridging Urban-Rural Divides



The rural immersion programme of MIT-WPU offers a distinctive educational experience that enables students to comprehend and tackle challenges confronting rural communities. During the programme, students visit villages, immersing themselves in local culture, community dynamics, and landscapes. They engage in diverse projects like optimising irrigation, water conservation, waste recycling, and solar power integration to enhance rural sustainability. This immersive hands-on learning cultivates critical thinking, problem-solving, and community awareness, fostering a profound understanding of rural dynamics and innovative problem-solving. These initiatives empower students to bridge the urban-rural gap in India, driving positive change.









# R.I.D.E.

Igniting Innovation and Entrepreneurship



R.I.D.E., a one-of-its-kind and exceptional annual conclave hosted by the Innovation Club of MIT-WPU, pioneers an educational paradigm beyond academics, channelling students towards entrepreneurship. This event exposes participants to cutting-edge research, entrepreneurship, design thinking, and innovation across various domains. With a footfall of over 10,000 students, the 5-day conclave features 100+ startups from diverse sectors like technology, healthcare, sustainable energy, and more. Over 50 venture capital experts address students, discussing transformative startup dynamics and market trends, fostering unconventional thinking within a real-world startup context.







es

20

I.D.E.22

MIT-WPU  
I.D.E.22  
Innovation Conclave  
of MIT-WPU  
20<sup>th</sup>-24<sup>th</sup>  
September, 2022

# Bharatiya Chhatra Sansad

## Empowering Youth for Change



Bharatiya Chhatra Sansad (BCS), the flagship initiative of MIT-WPU and brainchild of Shri. Rahul V. Karad is a nationally recognised event fostering youth engagement in India's political framework, governance, and administration. This non-partisan platform enlightens young minds about the evolving socio-political landscape through debates, discussions, and addresses by distinguished personalities—chief ministers, governors, union ministers, and parliamentarians. BCS unequivocally acknowledges the contributions of young sarpanches, local leaders, and social activists catalysing positive change. Witnessing participation from 25,000 institutes nationwide, BCS empowers youth to actively shape India's future.

WORLD PEACE UNIVERSITY  
भारतीय छात्र संसद  
INDIAN STUDENT PARLIAMENT  
MIT School of Government





KARNATAKA GOVT. PARLIAMENT  
ಕರ್ನಾಟಕ ಸಂಸದ  
(KARNATAKA GOVT. PARLIAMENT)  
Government

## Other MIT-WPU Events



MIT-WPU stands distinguished for its dynamic and immersive academic and extracurricular events, offering students a plethora of opportunities for learning, growth, and community engagement. The university hosts over 100 student-led events annually, spanning diverse interests and topics. These include cultural festivals, illuminating guest lectures, impactful community service projects, and spirited sporting events. Participating in these events equips students with invaluable skills, facilitates meaningful connections, and fosters their active involvement in the thriving MIT-WPU community. Following are a few such events:

- ◆ Design Xpo
  - ◆ Aarohan
  - ◆ Kala Mehfil
  - ◆ Hackathon
  - ◆ National Conference on Media & Journalism
  - ◆ Abhivyakti
  - ◆ TEXEPHYR
  - ◆ Tesla
  - ◆ Techogenesis
  - ◆ RoboCon
  - ◆ Science Expo
  - ◆ World Parliament of Science, Religion & Philosophy
  - ◆ Bharat Asmita National Awards
  - ◆ National Women's Parliament
  - ◆ International Symposium on Law and Peace
  - ◆ Vidhi-Manthan
  - ◆ Peace Marathon
  - ◆ Social Leadership Development Programme
- And many more...









# MIT-WPU Student Clubs

MIT-WPU is a vibrant hub for student involvement, boasting over 100 clubs spanning cultural, social, sports, co-curricular, and NCC/NSS categories. Such student-led clubs provide students with a platform for active participation, connection-building, and leadership skills development.

- The Innovation Club is a hub for entrepreneurial and innovative events and workshops
- The Art and Photography Club brings together aspiring artists for creative expression
- The Sports Club, orchestrating spirited sporting events and activities
- The Cultural Club celebrates diversity and fosters cultural exchange
- Aatman- The sole Mental Health Club led by Psychology students, promoting well-being
- Team Dart- A motorsports team participating annually in the Rally Car Design Challenge (RCDC)

These clubs excel in national and international competitions, amplifying the dynamic MIT-WPU experience, nurturing leadership, and fostering holistic personal growth. Active participation in these diverse student clubs empowers students to optimise their time, enhance their skills, and contribute purposefully to the community.







CHALCHITRA



AATMAN





# Peace Studies: Fostering Holistic Growth

---

Understanding the importance of inner and social peace and conflict management skills is crucial in today's world. MIT World Peace University has adopted UNESCO's core vision of & Building Peace in the Minds of Young Men and Women as its guiding ethos.

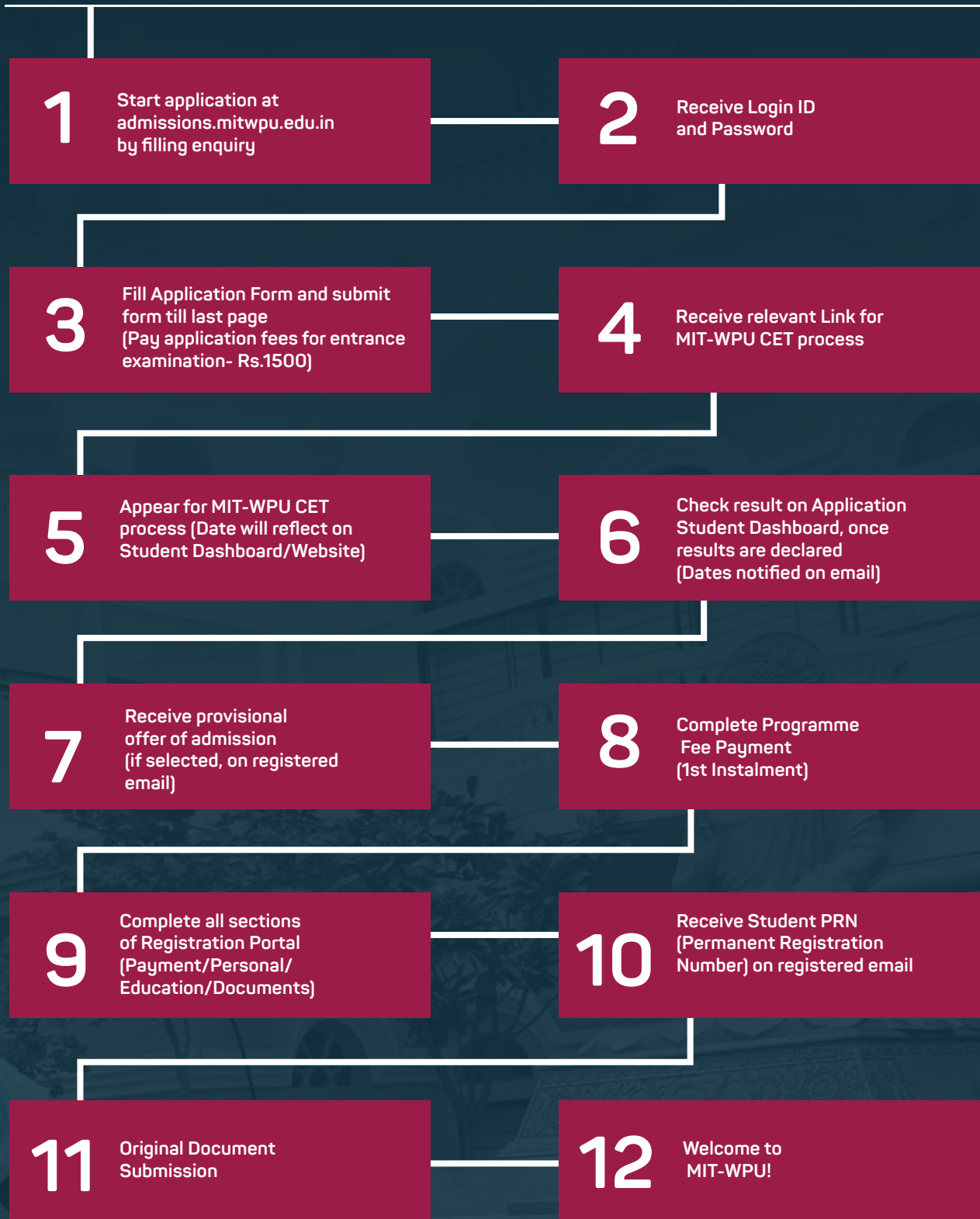
The university offers a mandatory course of peace studies that lays the foundation for spiritual peace and harmony. It explores new ideas and practices from various cultures to tackle the challenges of global peace and sustainable development. The university also plans to introduce an advanced postgraduate degree programme in Peacebuilding and Conflict Management that offers state-of-the-art learning opportunities to study traditional and contemporary pedagogies of peacebuilding and conflict management. The main objective of this course is to prepare students to become agents of social change and genuine global citizens. It trains them in non-violent communication to promote peace and prevent violence in communities and workplaces. Furthermore, the peace studies module also acquaints students with diverse yoga practices that enrich their cognitive prowess and information base, refining critical thinking and enhancing their overall personality. This interdisciplinary course, developed with input from scholars and practitioners worldwide, helps students build knowledge of India's spiritual and cultural ethos. Additionally, the course covers essential conflict management knowledge and skills that are in high demand in today's corporations.





# Admission Process

The admission process at MIT-WPU is thoughtfully designed to identify and nurture talented individuals, creating a vibrant and diverse community of learners. This section will guide prospective students through the necessary steps and requirements to become part of the MIT-WPU family, where a commitment to knowledge, innovation, and personal growth is at the forefront of our educational mission.





Dr. Vishwanath Karad  
**MIT WORLD PEACE UNIVERSITY** | PUNE  
TECHNOLOGY, RESEARCH, SOCIAL INNOVATION & PARTNERSHIPS

Call: [+91-20-71177137](tel:+912071177137)  
WhatsApp: [+91 9881492848](tel:+919881492848) (Message only)  
Email: [admissions@mitwpu.edu.in](mailto:admissions@mitwpu.edu.in)  
Website: [mitwpu.edu.in](http://mitwpu.edu.in)  
Address: [MIT-WPU, Kothrud, Pune.](#)

Scan to Apply



Disclaimer :This brochure provides general information about the programmes. Dr. Vishwanath Karad MIT World Peace University, Pune (MIT-WPU) reserves the right to revoke, modify, add or delete one or more of the terms and conditions outlined in the brochure. MIT-WPU reserves the right to amend the provisions of the programme, eligibility, admission & scholarships without notification & as deemed fit / appropriate due to any changed circumstances.