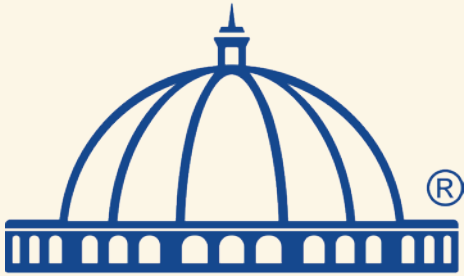




Since 1983



MIT-WPU

॥ विश्वशान्तिर्ध्रुवं ध्रुवा ॥



PLACEMENT BROCHURE

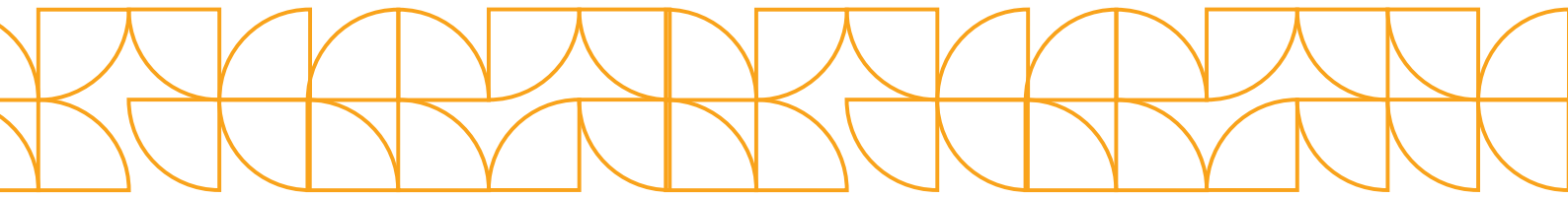
2025-26

About MIT-WPU

MIT-World Peace University, with a legacy of more than 4 decades of educating the nation's youth is more committed than ever to ensure all-round development of our students. We manage this by concentrating not only on the mental development of our students but also on their physical and spiritual development. With a legacy of educating over 100,000 alumni, MIT-WPU has perfected its signature WPU Teaching Method - an enriching blend of experiential and academic learning. This holistic approach is strengthened through structured yoga and meditation, diverse sporting activities, and an array of clubs and cultural platforms that nurture well-rounded growth and leadership.

Our curriculum is dynamic and future-focused, continuously updated to align with emerging industry needs and technological advancements, ensuring that every MIT-WPU student is prepared to excel in a rapidly evolving global landscape.





About CIAP

- ✓ Placements & Internships with Leading Organizations
- ✓ Strategic Industry–Academia Alliance
- ✓ Future-Ready Talent Pipeline
- ✓ Centres of Excellence & Sponsored Innovation Labs
- ✓ Comprehensive Career-Readiness Ecosystem
- ✓ Seamless Campus Recruitment Experience
- ✓ Multi-Sector Corporate Partnerships & Recruiter Network (IT, Core, BFSI, Consulting, Analytics)
- ✓ Global-Standard Training and Mentorship Support.
- ✓ Alumni & Industry Leadership Connect

MIT-WPU takes pride in its exceptional Placement Department, known as the Centre for Industry–Academia Partnerships (CIAP). CIAP serves as a cornerstone of our students’ career success, going beyond conventional placements to provide a comprehensive ecosystem that prepares students for industry demands and future leadership roles.

India’s leading and most admired organisations across IT, Core Engineering, Consulting, BFSI, Analytics, and emerging sectors actively recruit from MIT-WPU. Strong industry linkages, consistent corporate engagement, and an expanding recruiter network contribute to outstanding placement outcomes year after year.

With strategic partnerships with over 700 organisations and access to a robust network of more than 3,500 recruiters, CIAP ensures abundant opportunities for students at both undergraduate and postgraduate levels. From training and readiness programmes to seamless campus recruitment coordination, CIAP plays an integral role in shaping students into confident, capable, and industry-ready professionals.

Aims & Objectives

- To organize campus interviews for final year students from all over India.
- Train students in aptitude tests, group discussions, and technical interviews through professional trainers.
- Conduct career counselling sessions by organising sessions with leading industry professionals and influencers.
- Maintaining consistent engagements with the industry through Guest Lectures, Conferences, Seminars, etc.
- Provide needed training to students in the area of requisite soft skills
- Work together with the industry for live capstone projects, Research, Workshops, and industrial visits.

CAREER DEVELOPMENT CENTRE (CDC)

MIT-WPU offers a comprehensive training and development programme designed to elevate the employability of our final-year students. This programme is an integral part of our curriculum and aims to enhance students' proficiency in soft skills and domain-specific areas. Our dedicated team of trainers employs cutting-edge training methods to prepare our students to excel in the corporate world. This training equips them to confront the challenges of a competitive job market effectively.

Domains of Training

Career Counseling and Guidance

Offering personalized career advice and counseling to help students identify their strengths, interests, and suitable career paths.

Soft Skill Development

Organizing workshops, training sessions, and seminars to enhance students' soft skills, such as presentations skills, group discussion skills etc.

Alumni Networking

Establishing connections with alumni to offer mentorship, career advice, and potential job openings to current students.

Training Statistics

10000+

Students

250+

Company
Specific
Trainings

350+

Training Batches

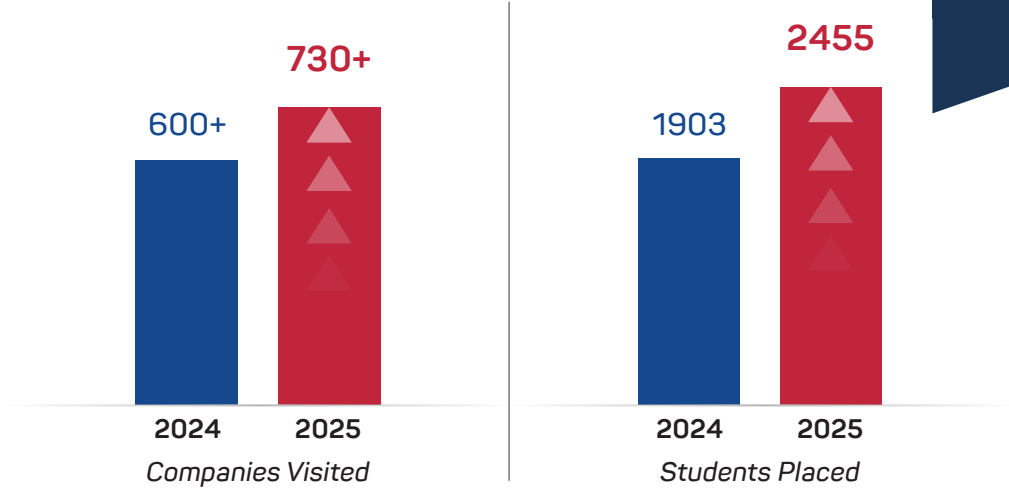
50+

Elite Trainers

Placement Statistics



Highest CTC
51 LPA



Placement Highlights

Top Recruiters

2026 Batch

The placement season for the 2026 graduating cohort has begun on a strong and confident note, with several leading organisations across IT, Core Engineering, Consulting, Analytics, and BFSI initiating their recruitment processes early. This response reflects the continued industry confidence in MIT-WPU's talent pool and academic ecosystem.

The university has strengthened its readiness framework this year through focused domain bootcamps, enhanced assessment-preparation modules, and competency-driven training interventions. These efforts have contributed to improved student performance in technical evaluations, case rounds, and early interview stages.

Regular corporate interactions, leadership sessions, and exposure to real-world problem-solving have helped students demonstrate clarity, adaptability, and professional maturity-qualities consistently valued by top employers. With a strong recruiter pipeline and additional organisations scheduled in the coming months, the 2026 placement season is positioned for excellent outcomes. MIT-WPU remains committed to offering a seamless, high-quality recruitment experience for all partnering organisations.

Internship Highlights 2026 Batch

Empowering the Class of 2026 with early industry integration. Our strategic internship partnerships offer students the platform to solve real-world challenges.

Highest CTC
for current batch

46 LPA

More than 40 students
placed with

10+ LPA

Highest Stipend

₹1,42,500



Beyond Placements: Building Careers



Arham Mohsin Kaskar

24.5 LPA

Cairn Oil and Gas



Mrutyunjay Patil

25 LPA

DLTX



Kanishk Arya

24 LPA

Zomato



Mrunmayi Bagal

9.80 LPA

Dessert Group



Jeremy John Mathew

13.68 LPA

ZS Associates



Manisha Pardeshi

9.80 LPA

Jyesta Corporate Entity





Manaswee Raut
16.42 LPA
Federal Bank



Anoushka Mathur
22 LPA
JNTL Consumer Health
(India) Pvt. Ltd.



Rutuja Kale
16.42 LPA
Federal Bank



Ayushi Srivastava
5.5 LPA
Dr. Reddy's Laboratories



Neha Karpe
12 LPA
Porter



Dhaval Ahir
5.4 LPA
Lifeline Foundation



Beyond Placements: Building Careers



Chinmyee Mahajan

6.5 LPA

Varroc



Devika Vijith

9 LPA

Nayam Innovations
Pvt. Ltd.



Monali Kolambe

6 LPA

Dr. Reddy's Laboratories



Monica Singh

5.76 LPA

Dilasa Foundation



Chirag Borse

5.5 LPA

OnlyGood FutureTech
(India) Pvt Ltd





Aditi Shinde

10 LPA
Connectwise



Alric Raiden Monteiro

13 LPA
GamesKraft



Anushka Maheshwari

6 LPA
Brand M



Rohan Gaikwad

5 LPA
Aadesh Foundation



Sakthi Sanna

5 LPA
Vcheck Global



Fueling the Next Generation of Industry Leaders

B.Tech Civil Engineering



Amir Lehari
Reliance Industries
8 LPA



Amruta Gorde
Burns & McDonnell
7 LPA



Sushmit Shinde
Afcons Infrastructures Pvt. Ltd
6.6 LPA



Abhishek Beede
Afcons Infrastructures Pvt. Ltd
6.6 LPA



Shreeraj Narsale
Infrastructures Pvt. Ltd
6.6 LPA



Om Kankale
Megha Engineering &
Infrastructures Limited
6 LPA



Vaishnavi Ghadge
Essar Power
6 LPA



Atharv Yadav
Essar Power
6 LPA



Manjiri Khule
Megha Engineering &
Infrastructures Limited
6 LPA



Harsh Ghadia
Megha Engineering &
Infrastructures Limited
6 LPA

B.Tech Mechanical Engineering



Pranav Kumar
Indus Air
17 LPA



Samrat Gandhi
Indus Air
17 LPA



Aayush Patil
ATS Conveyors
11 LPA



Pratik Kshirsagar
ATS Conveyors
11 LPA



Krisht Aggarwal
ATS Conveyors
11 LPA



Aashay Sangalkar
ATS Conveyors
11 LPA



Kaushal Kshirsagar
ATS Conveyors
11 LPA



Vishwajay Borawake
AP Moller Maersk
10.83 LPA



MANDAR NAIK
ATS Conveyors
10.67 LPA



Anshul Rathi
ATS Conveyors
10.67 LPA

B.Tech Chemical Engineering



Sanchi Gundecha
JSW
8 LPA



Priyanka Grover
Sulzer
8 LPA



Mohammad Sadriwala
Reliance Industries
7.5 LPA



Tanmay Joshi
Reliance Industries
7.5 LPA



Juee Bhalaria
Reliance Industries
7.5 LPA



Vaishnavi Paramkanthi
Reliance Industries
7.5 LPA



Vaishnavi Harkare
Ecolab
6.32 LPA



Nirav Dobariya
Lloyds Consulting &
Engineering
6 LPA



Dipika Gaikwad
Lloyds Consulting &
Engineering
6 LPA



Vivan Poduval
Worley
5.8 LPA

B.Tech Electronics & Communication Engineering



Ashish Kumar Tiwari
ZS Associates
13.68 LPA



Sanya Deshmukh
ZS Associates
13.68 LPA



Rohan Jha
ZS Associates
13.68 LPA



Varun Somani
UBS
12.5 LPA



Ashutosh Bishoi
ANZ
12.5 LPA



Isha Bishnoi
IBM
12.25 LPA



Simon Gupta
Schneider Electric
12 LPA



Anuja Salunkhe
Schneider Electric
12 LPA



Faiz Alam
Amadeus
11.5 LPA



Shivam Chintamani
Amadeus
11.5 LPA

Fueling the Next Generation of Industry Leaders

B.Tech Petroleum Engineering



Mayank Kumar
Cairn Oil and Gas
24.5 LPA



Prachi Dohale
Chevron
19 LPA



Vatsal Arya
Chevron
19 LPA



Vishal Chauhan
Chevron
19 LPA



Shailesh Bhakare
Chevron
19 LPA



Prajwal Chetule
Reliance Industries
12 LPA



Anupam Kumar
Reliance Industries
12 LPA



Balraj Tavanandi
Reliance Industries
12 LPA



Chinmay Sadadekar
Reliance Industries
12 LPA

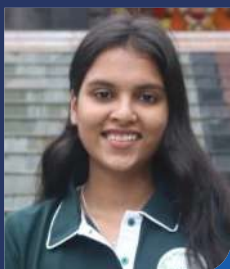


Adib Mulla
Baker Hughes
9.5 LPA

B.Tech Computer Science & Engineering



Asmi Singh
My Tripmates
20 LPA



Shivanshi Singh
JP Morgan
19.75 LPA



Saumya Jain
Chevron
19 LPA



Arnav Gajjar
Chevron
19 LPA



Devasthali Tanvi Atul
eQ Technologic
13.88 LPA



Gorasia Meet Vijaybhai
ZS Associates
13.68 LPA



Patil Vinit Vivek
Forma.AI
13 LPA



Shah Malay Jignesh
UBS
12.5 LPA



Parimal Kolhe
UBS
12.5 LPA



Smit Yenkar
ANZ
12.5 LPA

Ramcharan School of Leadership -PG



Sahil Wasankar
Federal Bank
16.42 LPA



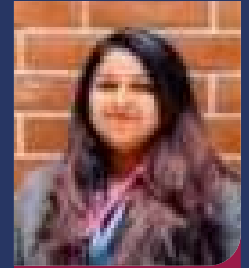
Aditya Patil
Federal Bank
16.42 LPA



Aachal Bhatt
Federal Bank
16.42 LPA



Aakash Thakur
Jaro Education
12.76 LPA



Prachi Gadkari
Trinamix
12 LPA



Tanay Vats
Trafigura
11.15 LPA



Komal Mota
Pattern Technologies
10.5 LPA



Shaurya Pratap Singh
Pattern Technologies
10.5 LPA



Abhishek Shinde
Pattern Technologies
10.5 LPA



Gargi Nerale
Pattern Technologies
10.5 LPA

School Of Business - PG



Nikhil Mate
Federal Bank
16.42 LPA



Leon Lijo
Federal Bank
16.42 LPA



Vighnesh Bedurkar
Federal Bank
16.42 LPA



Nikhil Sonigra
Federal Bank
16.42 LPA



Charitha Kakkilaya
Federal Bank
16.42 LPA



Ayush Gujarathi
Federal Bank
16.42 LPA



Janhavi Dehadray
Federal Bank
16.42 LPA



Neha Wani
Federal Bank
16.42 LPA



Kaustubh A Shah
AX PROPERTY
14.23 LPA



Khyati Sharma
Welspun Corp. Ltd
13.5 LPA

Fueling the Next Generation of Industry Leaders

School of Economics & Public Policy



Aanchal Sharma
Grandview Research
5.37 LPA



Lipakshi Bonde
Kings Research
4 LPA



Garima Mishra
Decipher Market Research
3.5 LPA



Hrishikesh Bhelsekar
Decipher Market Research
3.5 LPA



Sanika Patil
Decipher Market Research
3.5 LPA



Mahika Joshi
Decipher Market Research
3.5 LPA



Sakshi Gore
Decipher Market Research
3.5 LPA



Vagmi Jain
Decipher Market Research
3.5 LPA



Ritika Adwani
Piramal Foundation
2.94 LPA

School of Health Sciences & Technology (Pharmacy)



Ankita Chauhan
Dr. Reddy's Laboratories
5.5 LPA



Anjali Adsul
Lupin Pharma
4.56 LPA



Vaibhav Mali
Aurolab
4 LPA



Nitish Kumar Tiwary
Aurolab
4 LPA



Manish Chavan
Aurolab
4 LPA



Sakshi Chaudhari
Medline Industries
4 LPA



Siddhant Randhe
Medline Industries
4 LPA



Priyanshi Namdeo
Medline Industries
4 LPA



Riya Bhendkar
Medline Industries
4 LPA



Vaishnavi Kalshetti
Medline Industries
3.88 LPA

School of Health Sciences & Technology (Clinical Sciences)



Charvi Kagade
Cinq in
5 LPA



Esha Agare
Cinq in
5 LPA



Yashvi Gala
I Tech India Pvt Ltd
4.56 LPA



Srishti Dasgupta
MindCafe
3.6 LPA



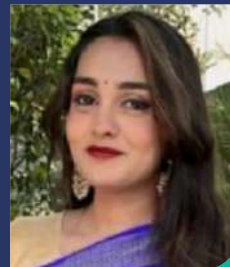
Ankita Ganguly
MindCafe
3.6 LPA



Jaya Arija
MindCafe
3.6 LPA



Garima Mahaur
MindCafe
3.6 LPA



Manpreet Kaur Matharu
Disha Foundation
3.6 LPA



Ishika Kota
Teach For India
3.4 LPA

School of Science and Environmental studies (Maths & Stats)



Saeer Kulkarni
Porter
12 LPA



Prajwal Thakre
PTC Software
9 LPA



Urvi Sakhalkar
Barclays
9 LPA



Shambhavi Pandey
Tech Mahindra
5 LPA



Devika Bapat
Tech Mahindra
5 LPA



Chetna Mali
Syneos Health
4.8 LPA



Revati Masali
Bizmetric
4 LPA



Pooja Gadekar
EY GDS
3.83 LPA



Shraddha Harihar
Accenture
3.44 LPA



Khushal Jain
Accenture
3.44 LPA

Fueling the Next Generation of Industry Leaders

School of Science and Environmental studies (Biology)



Dharati Patil
Dr. Reddy's Laboratories
6 LPA



Gargee Vichore
Markets and Markets
5.5 LPA



Muskan Arora
Markets and Markets
5.5 LPA



Eshita Deshpande
Markets and Markets
5.5 LPA



Gauri Girish Gadgil
Markets and Markets
5.5 LPA



Vanshita Nikhar
Lifeline Foundation
5.4 LPA



Aarti Singh
Aakash Educational
services Limited
4.5 LPA



Priti Deshmukh
bioMerieux
4.2 LPA



Laxmi Gorle
bioMerieux
4.2 LPA



Nupur Nerpagar
bioMerieux
4.2 LPA

School of Science and Environmental studies (Environmental Science)



Devanshi Parekh
IIT Bombay
5.5 LPA



Bhavana S Naikar
Chryso India
A Saint Gobain Company
5 LPA



Shubhankar Khangar
WildTales
4.56 LPA



Kavya BR
ACS International India Pvt. Ltd
4.5 LPA



Anuranj P
Berger Paints
4.5 LPA



Amey Paranjape
Banyan Tree Foundation
4 LPA



Khushbu Sangameshwari
Rupa Rahul Bajaj Centre for
Environment & Art - Pune
4 LPA



Mansi Vilas Sable
Rupa Rahul Bajaj Centre for
Environment & Art - Pune
4 LPA



Pooja Patil
Disha Foundation
4 LPA



Amogh Karegaonkar
SG Analytics
4 LPA

School of Science and Environmental studies (Physics)



Tanmay Gokhale
Varroc
6.5 LPA



Vaidehi Bahekar
Varroc
6.5 LPA



Chinmyee Mahajan
Varroc
6.5 LPA



Sampada Salunke
Lumax
6 LPA



Divya Kelkar
Future Market Insights
3.2 LPA

School of Health Sciences & Technology (Public Health)



Rucha Shirodkar
Lifeline Foundation
5.4 LPA



Shivani Puranik
Disha Foundation
4.8 LPA



Ridham Patel
Jivika Healthcare
4.2 LPA



Fueling the Next Generation of Industry Leaders

School of Design



Aditya Manish Mandle
GamesKraft
13 LPA



Vaidehi Bhosale
Connectwise
10 LPA



Monisha Panchal
Connectwise
10 LPA



Anushka Agarkar
Zensar
10 LPA



Apoorva Deshpande
Zensar
10 LPA

School of Liberal Arts



Anushka Pradhan
Airway Media
4 LPA



Dhruv Bloya
Automoto
4 LPA



Tanisha Jain
RevBoosters
4 LPA



Bhoomi Jain
Airway Media
4 LPA



Kashifa Zeenat
Airway Media
4 LPA

School of Media & Communication



Mansha Singh
Brand M
6 LPA



Veshika Maan
Aadesh Foundation
5 LPA



Vaishnavi Zinjad
Aadesh Foundation
5 LPA



Akshita Sharma
MyFroyoland
5 LPA



Rakshaa Prakash
Strategic Growth Advisors
4.80 LPA

School of Applied Arts



Sakshi Shinde
Rich
9 LPA



Sejal Mahajan
Rich
9 LPA



Shreeya Trivedi
GladOwl
Web Solutions Pvt. Ltd
5 LPA



Adra Jain
Get Will Done
5 LPA



Isha Chivate
Xcaliber Infotech Pvt. Ltd.
5 LPA

School of Law



Manav Atul Puri
Vcheck Global
5 LPA



Devna Menon
Credcore
4.50 LPA



Mauli Dogra
Credcore
4.50 LPA



Aashansa Varma
Credcore
4.50 LPA



Meetali Kalantri
Credcore
4.50 LPA



Dilprit Kaur Ahuja
Credcore
4.50 LPA



Anuhya Mallampalli
DServe Legal
4.2 LPA



Gaurav Gangwani
DServe Legal
4.2 LPA



Anushka Deshpande
Technotreon Intellectual
Ventures
4 LPA



Saloni Shrivastava
Technotreon Intellectual
Ventures
4 LPA

Success Stories



Being a student at MIT World Peace University has been an incredible journey. As a student of TY Electrical & Computer Engineering, I've had the opportunity to work on real projects, collaborate with people who bring diverse perspectives, and explore avenues I may not have elsewhere. Every project, event, and interaction has helped me gain exposure, develop new skills, and broaden my outlook. It's a place that constantly challenges and inspires you, and through this journey, I've discovered more about myself and my capabilities than I ever imagined.

Riddhi Attarde



I am currently pursuing BTech in Electronics and Communication Engineering at MIT World Peace University, where I have grown not only as a student but also as a leader. Serving as the University Cultural Secretary has strengthened my ability to lead teams and execute high impact initiatives. During my time here, I was selected among the three students from Maharashtra for the Viksit Bharat Youth Parliament and had the opportunity to host WTS 2025. I am truly grateful to be part of MIT-WPU, Pune. The supportive and approachable faculty have played a key role in shaping my confidence, values, and drive to create meaningful impact.

Akshita Saxena



I am pursuing a BSc in Computer Science with a specialisation in Cybersecurity at MIT-WPU, where I am developing a strong expertise in digital security, ethical hacking, and advanced computing concepts. This programme has provided me with a well-rounded education, combining rigorous theoretical learning with hands-on practical experience through real-world projects and industry exposure with access to cutting-edge resources and guidance from experienced faculty. I have cultivated a problem-solving mindset and a keen understanding of emerging cybersecurity threats, risk mitigation strategies, and secure system design. My academic journey has not only strengthened my technical proficiency but also enhanced my critical thinking and adaptability, preparing me to navigate the ever-evolving cybersecurity landscape with confidence.

Mukta Kodagpatil



I am Vaidehi Bhamre, currently pursuing BTech in Computer Science Engineering (Third Year) at MIT World Peace University (MIT-WPU), Pune. The Computer Science programme has significantly strengthened my technical skills, problem-solving abilities, and understanding of emerging technologies. The curriculum's strong focus on practical applications and industry-relevant projects has enabled me to develop a solid foundation in software development and innovation. Beyond academics, I am deeply passionate about trekking and the outdoors. I love exploring new trails and encouraging others to step out of their comfort zones and experience the beauty of nature. Trekking has taught me resilience, teamwork, and the joy of discovery—values I carry into every aspect of my life. The faculty members at MIT-WPU, Pune are knowledgeable, approachable, and highly supportive, creating an environment that fosters both academic and personal growth. I am proud to be part of this dynamic learning community and grateful for the role it has played in shaping my journey.

Vaidehi Bhamre





Studying at MIT-WPU has been a transformative experience. The faculty's dedication and the practical, hands-on approach of the curriculum allowed me to grow not just academically, but personally. From collaborative projects in labs to mentoring sessions, I developed critical thinking, leadership and teamwork skills. I'm grateful for the support I received, the friendships I made, and the confidence I've gained!

Jigyasa Pandey



"Beyond academics, MIT-WPU taught me leadership, teamwork, and self-discovery." Being a student at MIT World Peace University has been a transformative journey of growth and learning. As a Third-Year BBA Business Analytics student, I have had the privilege of leading social initiatives with Mission NeKi, serving as a member of the Student Council, and contributing as the University Secretary of the e-magazine and news journal. My participation in events such as the Bhartiya Chhatra Sansad (BCS) and RIDE has provided invaluable exposure, strengthened my leadership and teamwork abilities, and broadened my perspective. Each opportunity at MIT-WPU has not only enhanced my skills but has also inspired me to embrace challenges with confidence and purpose.

Shambhavi Bavi



Making the decision to study in India was not an easy one for me as an international student from Qatar. I was worried about the prospect of being in a new environment, encountering new people and learning systems. However, upon arriving at MIT-WPU University to pursue my MBA, I was pleasantly surprised to discover that it was one of the most enriching experiences in terms of learning, skill development, and skill diversification. I felt reassured that I had made the right decision to apply for this program at this university. The international administrator assisted me throughout the application process and answered all my questions about the course syllabus and curriculum. Although the MBA program was rigorous, the faculty was very supportive and motivating. They gave personal attention to each student academically and facilitated in solving a variety of cases based on the subject matter. Both the faculty and staff made the learning experience enjoyable and intellectually stimulating.

Ms. Wafaa Younis Khan



As a BBA student specializing in Global Business Management at MIT World Peace University, my journey has been transformative. The curriculum's blend of marketing, entrepreneurship, and innovation honed my strategic thinking and leadership skills. My exchange program at Nottingham Trent University and courses at INSEAD Singapore enriched my global business outlook. Additionally, training at IIT Jodhpur enhanced my analytical and technical abilities. MIT-WPU, Pune's supportive faculty and modern infrastructure have fostered my personal and professional growth. Engaging in research projects and practical learning equipped me for real-world challenges, shaping my career ambitions and preparing me for future success.

Zeba Shaikh



Success Stories



I'm Vidhi Sikchi, a BA final year psychology honors student. I am immensely grateful for MIT-WPU for giving me numerous opportunities for upskilling myself and enhance my confidence be it through events, guest lectures or through everyday classes that helped me apply and enhance my knowledge about different branches of psychology. These three years of my undergraduate were strikingly eventful as well as a strong foundation for a rigorous subject like psychology.

Vidhi Sikchi



As a Bachelor of Arts in Political Science student at MIT World Peace University (MIT-WPU), I've gained valuable insights into global politics, governance, and international relations. The programme's emphasis on research, critical thinking, and analytical skills has equipped me with the knowledge to navigate complex geopolitical issues. As an international student from Namibia, I've appreciated the university's supportive faculty, inclusive environment, and modern infrastructure. The programme has not only deepened my understanding of political science but also enabled me to apply theoretical concepts to real-world problems. The skills and knowledge I've acquired have been instrumental in my personal and professional growth, allowing me to engage in informed discussions, analyse complex issues, and develop well-reasoned arguments. I'm grateful for the opportunity to study at MIT-WPU and confident that my degree will open doors to new opportunities in diplomacy, governance, and international relations.



Ndjipua Zamunu Katuu



I'm Vaishnavi Dhaytadak, a student at MIT World Peace University, pursuing my second year of BA (Hons) Psychology. My journey at MIT-WPU has been enriching since day one. The university provides an excellent learning environment where curiosity and critical thinking are nurtured. The professors are incredibly knowledgeable and approachable, always encouraging us to explore our potential. The diverse programmes, research opportunities, and hands-on experiences, such as workshops and fieldwork, have refined my skills and broadened my perspectives. I feel grateful to be part of such a vibrant and supportive academic community, and I am confident it will shape my future in psychology.

Vaishnavi Dhaytadak



I am Simran Tiwari, a third-year student of BA (Hons.) Psychology at MIT-WPU. My journey here has been truly transformative. I have learned to think critically, explore beyond textbooks, and apply knowledge in practical ways. The supportive faculty have always guided me with patience and encouragement, which has boosted my confidence and clarity in the subject. I also appreciate how MIT-WPU balances academics with cultural activities and value-based learning, helping me grow as a well-rounded individual. I feel proud to be a part of this vibrant community that inspires me every day to reach my full potential.

Simran Tiwari





Since 1983

Dr. Vishwanath Karad

MIT WORLD PEACE UNIVERSITY | PUNE

TECHNOLOGY, RESEARCH, SOCIAL INNOVATION & PARTNERSHIPS



centralplacements@mitwpu.edu.in

