



Dr. Vishwanath Karad

**MIT WORLD PEACE
UNIVERSITY | PUNE**

TECHNOLOGY, RESEARCH, SOCIAL INNOVATION & PARTNERSHIPS



MIT-WPU Hostel: Where Community Cultivates Growth



 hostel.admin@mitwpu.edu.in

 +91-020-48552855



Powered by **AAALAY**

Your Home Away From Home

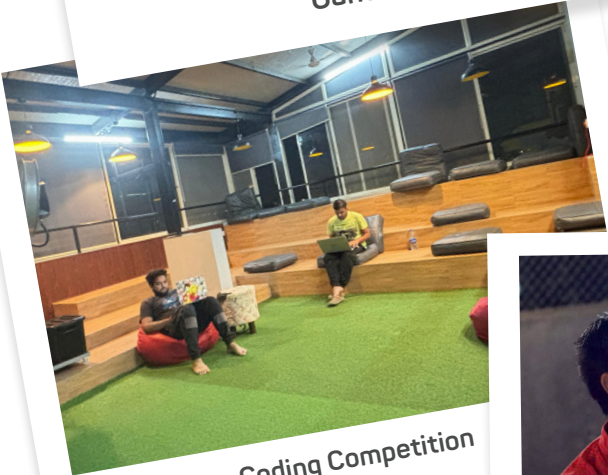
Welcome to the heart of college life - 'MIT-WPU Hostel' powered by Aalay Property Solutions. Every aspect of our hostel revolves around your studies, ensuring you have the perfect environment to thrive. At our college hostel every hallway echoes with laughter, every room holds a story, and every moment is a chance to forge lifelong connections. Our college hostel isn't just a place to stay – it's a vibrant community where friendships are made, memories are cherished, and dreams are nurtured. Step into your home away from home and embark on an unforgettable journey of growth, learning, and endless adventures.



Ganesh Chaturthi



Holi



Coding Competition



Cultural Night

Modern Infrastructure

Designed for both relaxation and productivity, our accommodations offer the ideal blend of comfort and functionality, providing you with a space to unwind and excel academically. Elevate your college living experience with our thoughtfully curated rooms – where comfort meets scholarly success.



Dining Area

Taste the flavors of community in our vibrant dining area. From nourishing meals to shared laughter, it's where friendships flourish and memories are savored, creating a dining experience that's as fulfilling as it is delicious.

Well Furnished Rooms

We understand the importance of personal space and privacy. Each room in our hostels is thoughtfully designed, providing ample space for you to relax and study. The accommodation is offered in single, double and triple-sharing rooms.



Communal Facilities

Experience the convenience with our communal amenities hub – your one-stop solution for seamless living! From keeping snacks cool to freshening up your wardrobe or cooking up a quick meal, our facilities, including refrigerator, washing machine, microwave oven, and induction cooker, ensure all your needs are met with ease, right at your fingertips.

Recreation and Common Areas

Unwind and connect in our vibrant common areas, where relaxation meets recreation and every corner sparks inspiration. From cozy study nooks to dynamic recreational spaces, our hostel's facilities are designed to inspire collaboration, relaxation, and endless fun. Experience the heartbeat of campus life in our vibrant communal spaces – where every moment is an opportunity to connect and thrive.



MUSIC ROOM



HANGOUT ZONE



EXERCISE ROOM



STUDY ROOM



GAME ZONE

Services and Amenities

In-room Description

- + Beds with mattresses, bed sheets and pillows
- + Study desks
- + Independent wardrobe for every bed
- + Washroom with European style toilets
- + 24x7 Wi-Fi access

Other Amenities

- + Vigilant 24/7 security guards
- + CCTV coverage throughout the hostel premises
- + Regular Housekeeping
- + RO treated drinking water at convenient locations
- + Washing Machine, Refrigerator, Induction and Microwave are also available
- + Daily provision of breakfast and dinner, lunch on weekends with versatile menus
- + Student shuttle facilities from hostel to University campus
- + 2-Wheeler parking available on first come first basis
- + Hot Water availability



Seamless Interaction With Hostel Mobile App

Experience the seamless interaction at your fingertips, with our cutting-edge mobile app, empowering the students to communicate and raise issues anytime and anywhere, thus ensuring their peace of mind.

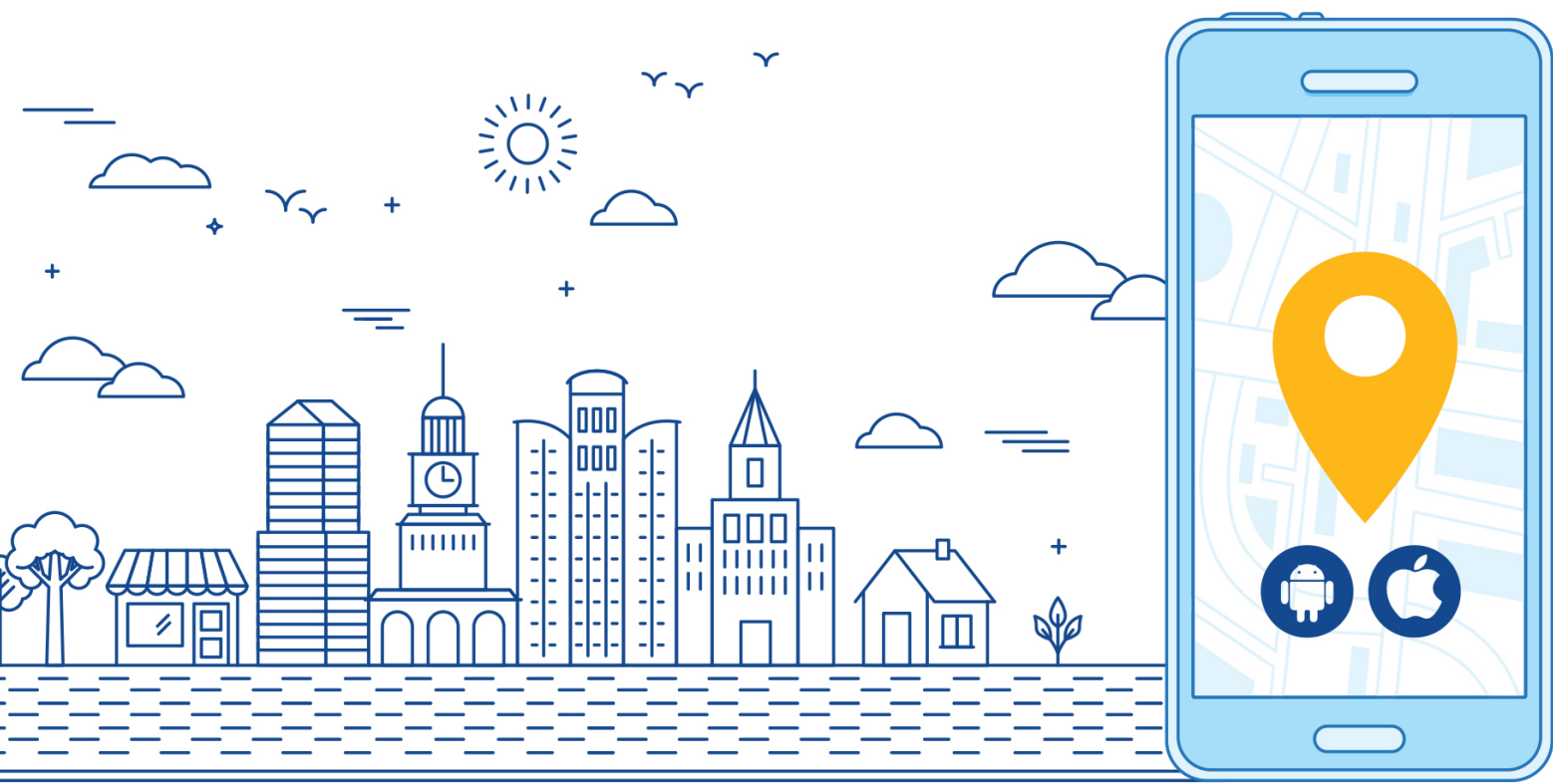
App features:

- + Effortless Room Allocation
- + Secured In/Out Tracking
- + Student attendance through app
- + Convenient facility booking like gym sessions, study rooms, gamezone, etc.

With every process meticulously designed for transparency and efficiency, the MIT-WPU Hostel Mobile App revolutionizes hostel living. Experience the future today—access granted at the time of hostel onboarding.

Join us on this journey towards seamless communication, enhanced monitoring, and unparalleled convenience.

Note: Access to the MIT-WPU Hostel mobile application will be provided at the time of students' physical joining at hostel.



Hostel Fee For Academic Session 2024-2025

Overall Hostel Fees

| Sharing | Annual Fees (In Rs.) | GST (In Rs.) | Total Fees Payable Annually (In Rs.) | Refundable Security Deposit (In Rs.) |
|---------------------------------|----------------------|--------------|--------------------------------------|--------------------------------------|
| Single Sharing | 250000 | 30000 | 280000 | 25000 |
| Double Sharing (Private)* | 215000 | 25800 | 240800 | 25000 |
| Double Sharing (Semi-Private)** | 185000 | 22200 | 207200 | 25000 |
| Triple Sharing | 185000 | 22200 | 207200 | 25000 |

* Private: This entails a double sharing occupancy, where the room is situated within the bedroom of a 1 BHK flat.

** Semi-Private: This entails a double sharing occupancy, where the room is situated within the hall of a 1 BHK flat.

Hostel Fee Installments

| Sharing | Booking Fee | 1st Installment + Security Deposit (In Rs.) | 2nd Installment (In Rs.) |
|-------------------------------|-------------|---|--------------------------|
| Single Sharing | 10000 | 171800 | 123200 |
| Double Sharing (Private) | 10000 | 149400 | 106400 |
| Double Sharing (Semi-Private) | 10000 | 149400 | 72800 |
| Triple Sharing | 10000 | 149400 | 72800 |

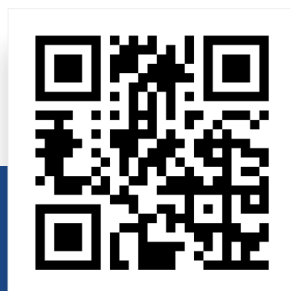
Refundable Security Deposit of Rs. 25,000/- has to be paid along with the 1st Installment

Secure Your Spot Now!

Pay the booking fee to reserve your hostel seat. Once the 1st installment is paid, your specific hostel room and bed will be allocated. Remember, the deadline for the 1st installment payment is June 1, 2024, with the 2nd installment due on December 31, 2024.

Hostel bed allocation operates on a first-come, first-served basis—act fast! Simply scan the QR code below and pay a booking amount of Rs. 10,000 to reserve your seat.

Don't miss out on this opportunity – reserve your seat today!



Apply Now



For any further information
Scan the QR code

***For any inquiries,
feel free to contact us at***



hostel.admin@mitwpu.edu.in



+91-020-48552855

For more information about hostel please go through hostel manual (available on our website in hostel section).

Disclaimer: This brochure offers general insights into the hostel facilities. Dr. Vishwanath Karad MIT World Peace University, Pune (MIT-WPU) reserves the right to alter, amend, supplement, or remove any of the terms and conditions outlined herein. The images depicted in the brochure serve as representations of the facilities, and MIT-WPU retains full authority to allocate hostels without prior notification, as deemed necessary or appropriate due to any evolving circumstances.